

THE X-YACHTS
RANGE

X-Yachts[®]

WORLD CLASS SINCE 1979



WHAT IS PURE X?

THE BEST OF BOTH WORLDS

A STYLISH HYBRID OF PURE PERFORMANCE AND ULTIMATE FAMILY CRUISING

The X range is designed to meet the demands of sailors who want to enjoy sailing in a wide variety of conditions as well as have all the luxury you would expect from the clean, timeless Danish style that is synonymous with X-Yachts.

The first X4³ was launched in the summer of 2016, representing exceptional sailing abilities and spacious airy interior in a luxury style. It was popular from the very beginning with its functional design working both at sea as well as in harbours. With the success of the X4³, it made perfect sense to continue with the X4⁹ and the X4⁶, both launched in 2018. The X4⁰ – Boat Of The Year award winner 2020 – was developed and launched in 2019, and in 2021 came the flagship X5⁶, selling three times the expected numbers already in the first year. In 2022 the new X4³ was introduced and sales immediately boosted with 40+ units.





POCKET LUXURY

The X4⁰ – winner of European Boat Of The Year 2020 – is the entry model in the Pure X range, blending quality, performance and styling with cruising capability.

With the introduction of the X-65 in 2007, X-Yachts started to infuse hulls for performance yachts utilising epoxy resin. Epoxy infusion construction offers fantastic control over the laminate allowing it to be optimised to maximise strength and stiffness, whilst saving weight.

In the X4⁰ all weight saved is used to increase the yacht's stability enabling the crew to have a more relaxed time and to feel safer and more comfortable. The fact, that the hull is cured, baked at high temperatures for almost 24 hours, not only optimises the hull material properties, but also minimises the risk of the darker coloured hull surfaces to suddenly start postcuring, losing the surface finish.

With over 10 years of experience building epoxy infused yachts, X-Yachts took the decision in 2018 to build all models using this technology, one of the only yacht builders to do so.

SAILING THE X4⁰

The X4⁰ can sail fast and point high to the wind thanks to its powerful lines, precision moulded composite T keel with a heavy bulb of lead giving a high degree of stability. The standard upwind sail area of 78 m² enables the X4⁰ to hit upwind speed of 6.5 knots already at 12 knots true wind speed.

TECHNICAL

The X4⁰ comes standard with the latest generation 40 HP Yanmar diesel common-rail engine. The engine is mounted onto special rubber shock absorbers to minimise vibrations, and the engine compartments fitted with sound reduction insulation to minimise noise.

X4⁰



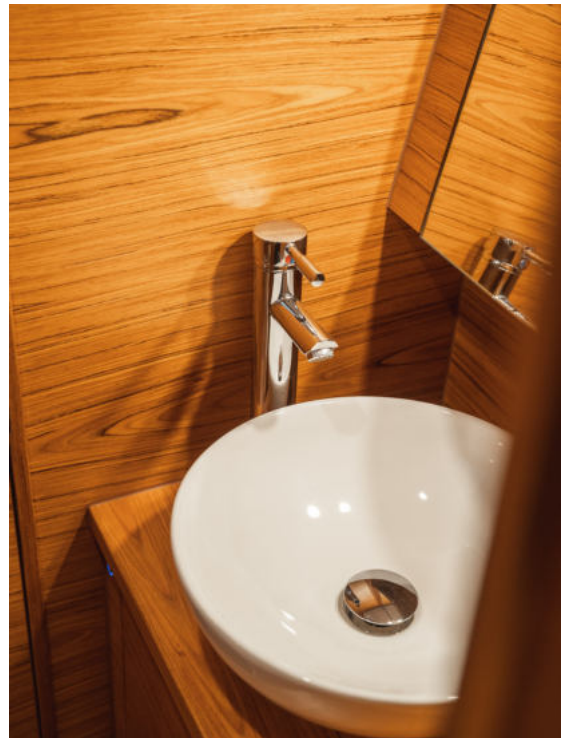
MAST & RIG

The X4⁰ benefits from an efficient sail plan with the discontinued rod rigging and tapered double spreader mast. As with all X-Yachts, the standing rigging is specified above industry standard to match the stiff hull construction, reduce stretch and to stop the mast pumping whilst sailing upwind into a heavy sea. This rig is incredibly stiff, providing a reassuring feel of safety and maintaining excellent sail shape and trim, satisfying the demanding cruiser and also appealing to the crew, who want to take the X4⁰ racing.



DECK LAYOUT

The standard deck layout comes with 4 winches: two halyard winches for self-tacker sheet and control line winches next to the entrance, and two main sheet winches aft of the cockpit's backrest coamings within reach of the helmsman. The deck has an integrated recessed self-tacker track for an 88% jib. The sail plan can be made even more powerful with adding longitudinal Jib tracks and two dedicated Genoa sheet winches on top of the cockpit backrest coamings, enabling the Genoa size to go up to 106% for improved light wind performance.





CRAFTSMANSHIP

The interior of the X4⁰ was designed to maximise the space available, creating a functional, safe and stylish user experience below deck. Once again, the interior design has proven Danish design flair and carpentry at its very best. The craftsmanship and detailing are of a very high standard, being traditional, but with a modern appearance. The wooden veneer is Nordic Oak as standard, with other options on offer. There is plenty of natural light and ventilation throughout the entire accommodation.

CONSTRUCTION

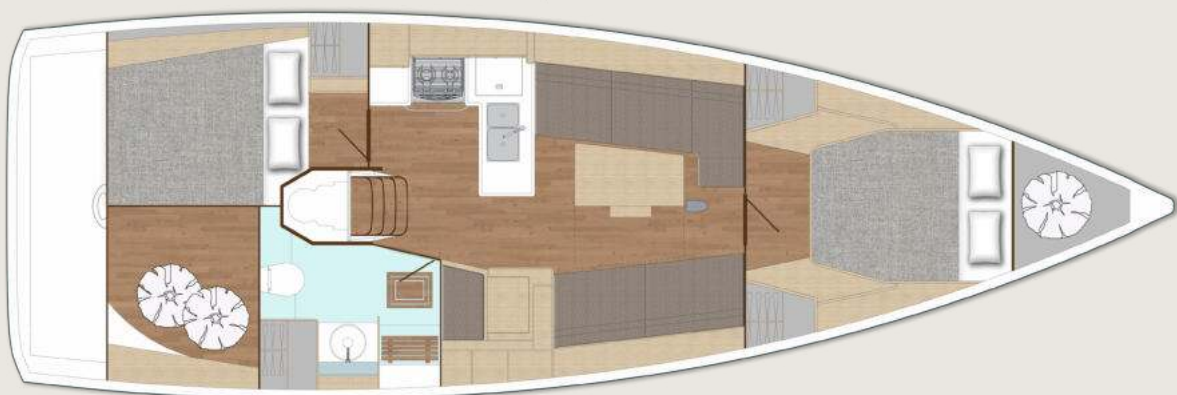
At the heart of the X4⁰ is the galvanized steel keel grillage structure. Pioneered by X-Yachts back in 1981, the galvanized steel hull girder offers superb reassurance and safety. Its primary role is to spread keel and mast loads into the hull, but it also enables the yacht to withstand extreme shock loads from grounding or an impact with a submersed object. Not only is the keel structure immensely strong, but it is also reliable and very easy to inspect for potential damage. Bolted to the steel grillage is the keel with iron fin and heavy lead bulb with moderate draft. There is both a shallow and a deep draft option available.

LAYOUT OPTIONS

The X4⁰ is available in a 2-cabin and a 3-cabin layout. The standard layout has a head compartment with separate shower compartment to starboard aft of the forward-facing navigation station with full length sofa.



OPTIONAL LAYOUT 1



OPTIONAL LAYOUT 2



Configure your own X4° now

X4°



X4° DIMENSIONS

LOA incl optional bowsprit	12.09 m	39'8"
Hull Length	11.50 m	37'9"
LWL	10.40 m	34'1"
Beam	3.81 m	12'6"
Standard draft	2.10 m	6'11"
Shallow draft	1.85 m	6'10"
Deep draft	2.40 m	7'10"
Ballast (standard)	3,050 kg	6,742 lbs
Displacement (light)	8,100 kg	17,857 lbs

ENGINE/TANKS

Engine diesel, standard	21.4 kW	29 hp
Fuel tank	180 Ltr	48 Gal (US)
Water tank	245 Ltr	65 Gal (US)

SAIL AREAS

P = 15.55 m, E = 5.24 m, ISP = 16.60 m, J = 4.33 m

Mainsail (aluminium mast)	47 m ²	505.9 ft ²
87% Self tacking jib	31 m ²	333.7 ft ²
106% Overlapping Genoa	37 m ²	398.3 ft ²
Asymmetric spinnaker	130 m ²	1399 ft ²



REDESIGNED HULL AND S-BOW DESIGN

The redesigned hull shape features wider stern sections above the waterline with the widest point brought further aft and with soft chines. This increases the downwind performance and allows for a much wider cockpit aft. Furthermore, the S-bow design and integrated standard bow sprit introduced on the X56 have been incorporated.

The mast height and hence the sail plan have been increased compared to the previous model to add to the performance and utilize the added hull stability.

The longer bow sprit allows for bigger and freer flying gennakers.



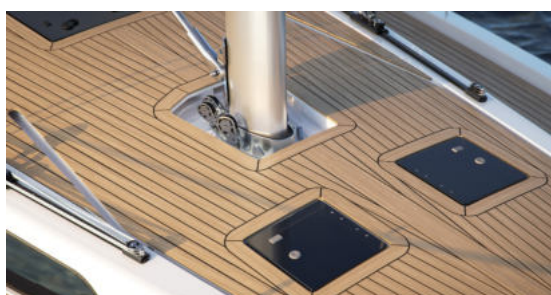
DECK & SPRAYHOOD

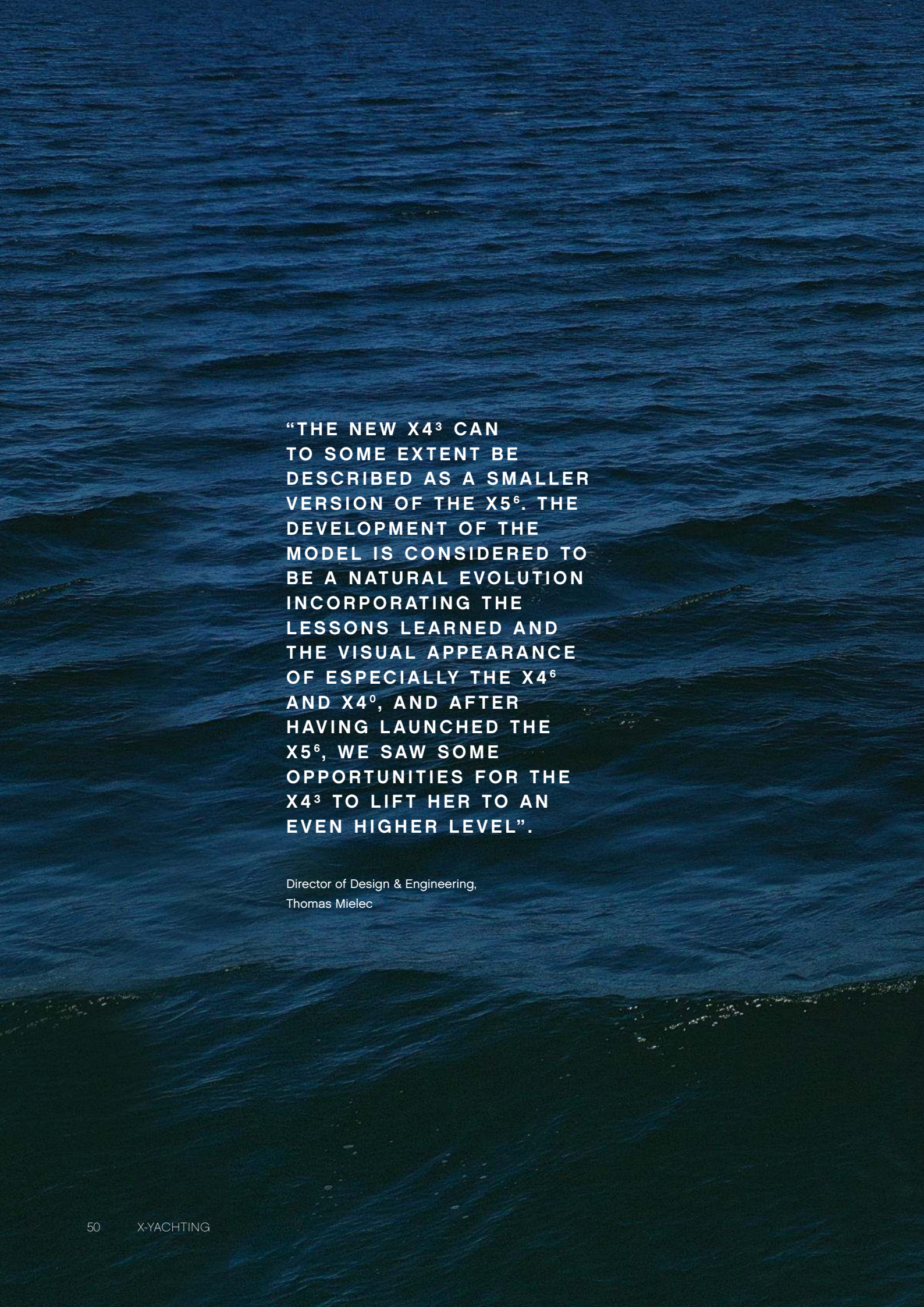
The deck and deck liner have been completely redesigned. The appearance of coachroof and coamings is brought to the more modern styling of the other Pure X models – and beyond.

The deck layout features longitudinal jib tracks as standard, but a self tacking track recessed into the cabin top is available as option. However, when this option is not chosen, the recess will be covered so that the aesthetic flush appearance of the cabin top is maintained.

The cabin side portlights are designed with the same type of openable sections as on the X4⁰ and X4⁶ allowing for better ventilation and a simpler aesthetic appearance.

The cruising sailor can look forward to a redesigned sprayhood layout – and apart from protecting the family from rough weather at sea, the shape of the sprayhood will be offering a sleeker visual appearance and a better forward view for the helmsman than on previous designs.





“THE NEW X4³ CAN TO SOME EXTENT BE DESCRIBED AS A SMALLER VERSION OF THE X5⁶. THE DEVELOPMENT OF THE MODEL IS CONSIDERED TO BE A NATURAL EVOLUTION INCORPORATING THE LESSONS LEARNED AND THE VISUAL APPEARANCE OF ESPECIALLY THE X4⁶ AND X4⁰, AND AFTER HAVING LAUNCHED THE X5⁶, WE SAW SOME OPPORTUNITIES FOR THE X4³ TO LIFT HER TO AN EVEN HIGHER LEVEL”.

Director of Design & Engineering,
Thomas Mielec





SPACIOUS COCKPIT

The X4³ cockpit area is wide and spacious and at the companionway, the hinged acrylic doors and integrated rope storage at the sides – provide good rope storage and comfortable access to the cabins.

THE INTERIOR

The wide aft section of the hull and slightly raised cockpit floor allows for spacious aft cabins and berth.

X4³



SPACIOUS LIVING

Danish design and architecture are famous for their clean, timeless style. It showcases luxury whilst also being functionally designed to work out on the open seas or moored up in harbour. Superior quality, detailed interior carpentry and selected materials set it apart from mass produced boats, delivering an exquisite, natural interior. Numerous deck and hull portlights allow for ample natural light to flood in, gifting the interior with a bright and roomy ambiance.

Plentiful storage space throughout allows for an uncluttered, 'live on board' lifestyle, giving you a place one can retreat to when the weather outside is less forgiving.





EXTERIOR

The hull is made using vacuum infused epoxy sandwich lamination technology to ensure maximum strength and safety. The combination of high keel weight and powerful sail plan makes the X4³ a dream to sail into wind and waves.

Plenty of fixed hull and deck port lights as well as openable deck hatches and portlights ensure maximum interior ventilation and light. Six well-sized, self-tailing winches for halyards, genoa and main sheet.

All X-Yachts quality features including encapsulated lead keel, hydraulic backstay adjuster, discontinuous rod rigging, and Spectra halyards are standard.



OPTIONAL LAYOUT 1



OPTIONAL LAYOUT 2



OPTIONAL LAYOUT 3



OPTIONAL LAYOUT 4



Configure your own X4³ now

X4³



X4³ DIMENSIONS

LOA (including bowsprit)	13.24 m	43'5"
Hull Length	12.67 m	41'7"
Waterline Length	11.33 m	37'2"
Beam (max)	3.99 m	13'1"
Draft - Shallow	1.85 m	6'1"
Draft - Std	2.2 m	7'3"
Draft - Deep	2.5 m	8'2"
Air Draft (not including Windex)	20.26 m	66'6"
Ballast - Std	3700 kg	8157 lbs
Displacement - Light	9400 kg	20723 lbs

ENGINE/TANKS

Engine Diesel	33 kW	45 hp
Fuel Tank - Std	200 ltr	53 gal(US)
Water Tank - Std	340 ltr	90 gal(US)

SAIL AREAS

P = 16.76 m, E = 5.695 m, IG = 1760 m ISP MH = 18.57 m, J = 4.77 m

Mainsail (aluminium mast)	54.8 m ²	590.0 ft ²
Genoa (106%)	45.1 m ²	485.0 ft ²
Asymmetric spinnaker	178 m ²	1915.9 ft ²

THE PERFECT FAMILY CRUISER

The X4⁶ is a hybrid between the X4³ and the X4⁹, sitting exactly in the middle. Shortly after her launch, the X4⁶ was nominated European Yacht of the Year 2019.

LIGHT, STRONG AND STIFF

Epoxy construction saves weight and maximises strength and stiffness. In the Pure X range, all weight savings are used to increase the yacht's stability, enabling the crew to have a more relaxed time and be safer and more comfortable. X-Yachts is one of the few production yacht builders building all hulls in epoxy vacuum infused technology.



X4⁶



DEN

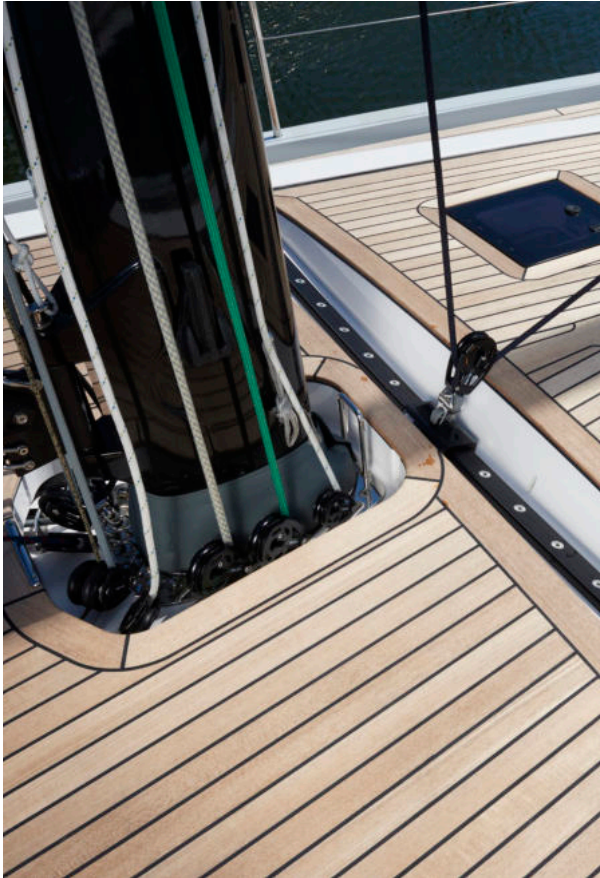




SAILING THE X4⁶

A hull with powerful lines and a precision moulded composite T-keel with a heavy bulb of lead gives a high degree of stability. This enables the X4⁶ to sail fast and point high to the wind. The 64 m² mainsail and 41 m² self-tacking jib makes the X4⁶ at 12 knots true wind already hits 7 knots boat speed.

X4⁶



MAST & RIG

An efficient sail plan with discontinued rod rigging, tapered double spreader mast and a deck layout that satisfies both the demanding cruiser and the crew who wants to take the X4⁶ to the race course.

DECK LAYOUT

The standard deck layout comes with 4 winches: Two for halyards, self-tacker sheet and control lines placed next to the entrance, and two main sheet winches aft of the cockpit's backrest coamings within reach of the helmsman. The deck recessed genoa self-tacker track is for an 88% jib. There is an option for coach roof top fitted longitudinal genoa tracks and two dedicated genoa sheet winches on top of the cockpit's backrest coamings, enabling the genoa size to go up to 106% for improved light wind performance.



CRAFTSMANSHIP

Once again, the interior design is Danish quality carpentry at its very best. The craftsmanship and detailing have a very high standard, being traditional but still with a modern appearance.

The wooden veneer is Nordic Oak as standard, with other options on offer.

There is plenty of natural light and ventilation throughout the entire accommodation.

TECHNICAL

The X4⁶ comes standard with a 57 HP Yanmar diesel common rail engine, and a 2-blade folding propeller on an S-drive installation. The engine is mounted on special rubber shock absorbers to minimise vibrations, and the engine compartment has high quality noise reduction.

X4⁶



CONSTRUCTION

A vacuum infused epoxy full sandwich hull, galvanized steel keel grillage, cast iron keel fin with a heavy lead bulb with moderate draft. A shallow and a deep draft option is available.





LAYOUT OPTION

The standard version offers 3 double cabins. Both aft cabins can be supplied with X-Yachts topside-hung pipe berths. The owner's cabin has an ensuite head compartment with adjacent shower unit as standard. Standard layout features a forward-facing navigation station with full length sofa.



OPTIONAL LAYOUT 1



OPTIONAL LAYOUT 2



Configure your own X4⁶ now

X4⁶



X4⁶ DIMENSIONS

LOA incl optional bowsprit	14.08 m	46'2"
Hull Length	13.50 m	44'3"
LWL	12.33 m	40'5"
Beam	4.27 m	14'0"
Standard draft	2.30 m	7'7"
Deep draft (T-keel)	2.50 m	8'2"
Ballast (standard)	4,500 kg	9,921 lbs
Displacement (light)	10,900 kg	24,030 lbs

ENGINE/TANKS

Engine diesel	41.9 kW	57 hp
Fuel tank	280 Ltr	74 Gal (US)
Water tank	360 Ltr	95 Gal (US)
Additional water tank	100 Ltr	26.5 Gal (US)

SAIL AREAS

P = 18.3 m, E = 6.15 m, IG = 18.6, ISP = 201 m, J = 5.12 m		
Mainsail (aluminium mast)	66 m ²	710.4 ft ²
88% self tacking jib	41.5 m ²	446.7 ft ²
106% Overlapping Genoa	50 m ²	538.2 ft ²
Asymmetric spinnaker	170 m ²	1829.9 ft ²



NO COMPROMISE

Following the success of the X4³, X-Yachts launched the X4⁹ at Boot Düsseldorf in January 2018.

The Pure X range is a true embodiment of the key feature setting X-Yachts apart from the competition. Faithfully following our passion, X-Yachts has always designed and produced yachts that deliver superior sailing pleasure.

The X4⁹ enables the crew easy handling in all conditions. Whether doing family sailing trips, long distance blue water cruising or competitive sailing, the X4⁹ offers the best combination of everything X-Yachts has developed over the years.



X4⁹

“The X4⁹ is squarely aimed at the no-compromise sailor who wants it all. It combines a comfortable, stylish interior, with clean, beautiful lines on deck and can even be raced with a minimal crew.”

Pip Hare, Yachting World



THE SALOON

The main saloon features a U-shaped sofa to port with option for a pouf. The table is for either a pouffe or a pair of chairs. The table is a beautifully crafted piece of veneered furniture, including a laminated edging. The hull portlights, along with the 2 large deck hatches, allow for plenty of light and a spacious and airy environment.



THE GALLEY

The galley comes as standard with large double pull-out bins, full pull-out drawers, top loaded fridge with gas strut, double sink, space for additional front-loaded fridge, 3 burner gimbaled oven, space for optional Nespresso coffee machine, space for optional microwave oven and plenty of storage space.

X4⁹



SPACIOUS LIVING

As you step below deck, you will notice the spacious entrance with laminated raw teak steps to prevent slipping, and elegant laminated oak handrails.



OWNER'S CABIN

The owner's cabin is large, spacious and bright. To starboard, a large double wardrobe is installed with shelves, drawers as well as ample space for hangers. The large centre berth has storage below accessible via two large gas strut supported top lids. Below are two large drawers.

NAV STATION

The forward-facing chart table version has space for an optional chart plotter and additional communication & sailing instruments behind the top hinged doors.

The X4⁹ is also offered in an aft-facing chart table version, which includes a separate shower adjacent to the aft head compartment.



LAYOUT OPTIONS

The X4° welcomes you with lots of new ideas. There are a number of layout options available, all beautifully presented in a modern and internationally recognisable Danish style and quality. The port aft cabin, slightly larger than the starboard aft cabin is offered as standard with a large double berth. It is also available with two twin berths, with the ability of converting into a large double berth using a cushion which fits in the space between.

There is an option for an additional shower in the aft head when the backwards-facing chart table is chosen.



OPTIONAL LAYOUT 1



OPTIONAL LAYOUT 2



Configure your own X4⁹ now

X4⁹



X4⁹ DIMENSIONS

LOA incl optional bowsprit	15.08 m	49'6"
Hull Length	14.50 m	47'7"
LWL	13.58 m	47'7"
Beam	4.49 m	14'9"
Standard draft	2.40 m	7'10"
Deep draft (T-keel)	2.71 m	8'11"
Ballast (standard)	5,450 kg	12,015 lbs
Displacement (light)	12,900 kg	28,440 lbs

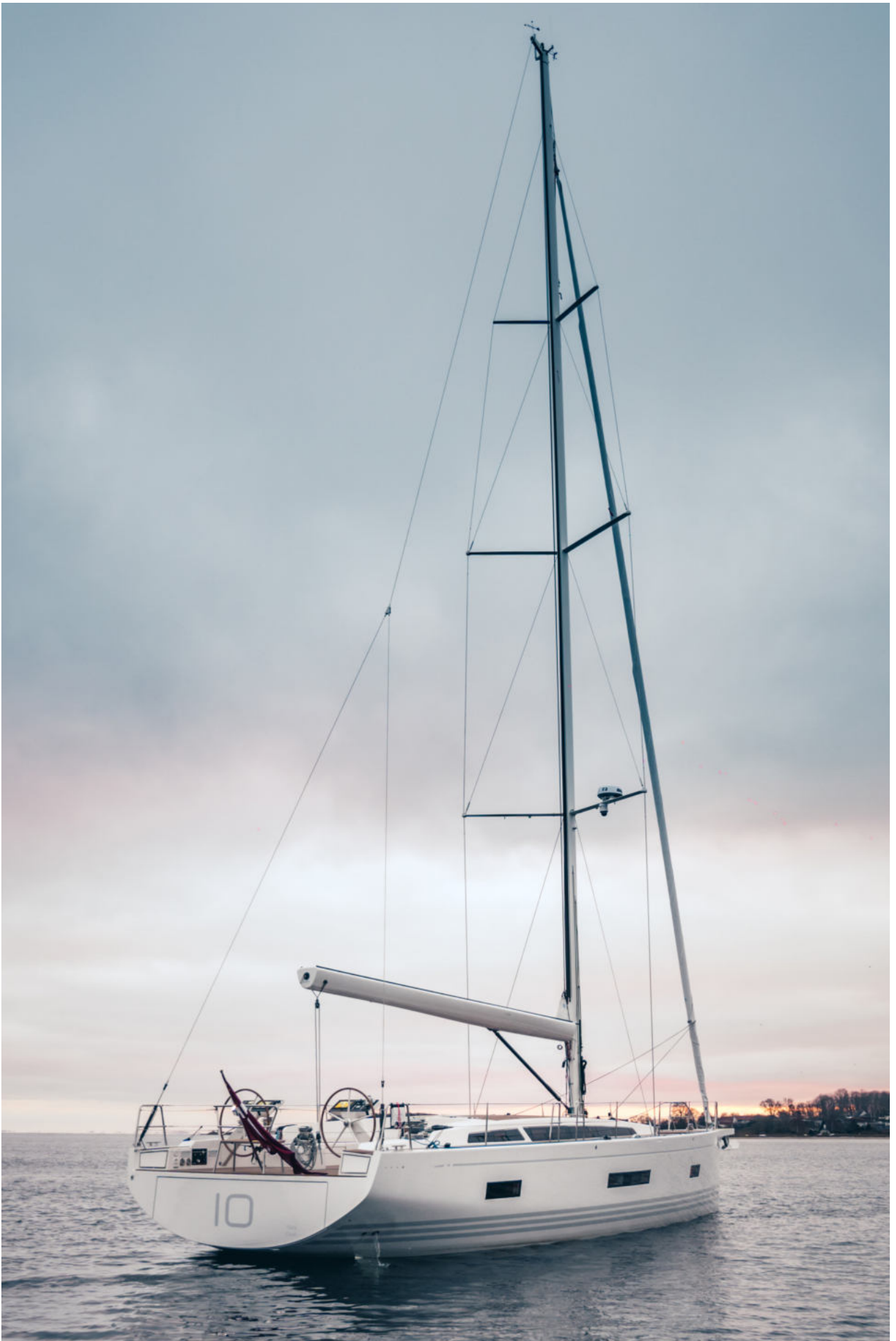
ENGINE/TANKS

Engine diesel	42.5 kW	58 hp
Fuel tank	300 Ltr	79 Gal (US)
Water tank	325 Ltr	86 Gal (US)
Additional tank (fuel or water)	85 Ltr	81.9 Gal (US)

SAIL AREAS

P = 19.00 m, E = 6.60 m, IG = 19.76, ISP = 21.07 m, J = 5.45 m

Mainsail (aluminium mast)	72.2 m ²	777 ft ²
88% Self tacking jib	48.1 m ²	518 ft ²
106% Overlapping Genoa	57.2 m ²	616 ft ²
Asymmetric spinnaker	230 m ²	2475 ft ²



X5⁶



SUPERIOR SAILING PLEASURE

The X5⁶ is a fifty-six-foot performance cruising yacht designed with serious cruising in mind, be it crossing the Atlantic, exploring beautiful Mediterranean islands or the Scandinavian archipelago. The X5⁶ joins the hugely successful Pure X Range.

The design philosophy was very clear from the outset – like all our yachts, we place a huge emphasis on giving the owner a superb and comfortable sailing experience, on a yacht that is easy to handle.

You will experience the feeling of confidence and control with the X5⁶. The helm position offers excellent visibility and agile handling that puts you in control.

The modern outboard mounted pedestals free up deck space, maintaining a clean and uncluttered cockpit to relax and entertain. The X5⁶ has various pedestal options to select from.



FLEXIBLE SAILPLAN

It could be argued that the sail plan for any yacht is one of its most important features. For more than 40 years, X-Yachts has accumulated a wealth of knowledge about how to build fast sailing boats. This experience has been put to good use; X-Yachts' racing pedigree can be seen as soon as you stand behind the wheel of the X5⁶. This is a yacht designed and built by sailors for sailors.

DECK LAYOUT

The deck of the X5⁶ has been designed to bring all the sailing control lines back behind the main seating area of the cockpit, keeping it safe and clear of ropes

4 powerful winches take care of all of the halyards and sheets and are set up so they can be controlled easily at the helm - or a separate trimmer. The deck has an integrated recessed self-tacker track for an 88% jib.

The X5⁶ can also be specified with coach roof mounted longitudinal genoa tracks with sheets and car adjusters led below deck and back to the cockpit winches.

A rope bin is placed at the aft end of each cockpit bench. Here, sheets and halyards can be stored when not in use.

TRANSOM GARAGE

The X5⁶ has a large transom door that also forms a bathing platform. The transom garage is large enough to store a 2.8 m inflatable tender.

The tender can be manoeuvred into the garage using an optional integrated crane, making launch and recovery a simple affair.

The X5⁶ can also be fitted with an optional telescopic gangway to allow for easy boarding when moored stern to.

X5⁶



HELMSMAN'S SEATS

The X5⁶ can be specified with optional teak and stainless steel helmsman's seats, mounted behind each of the wheels.

INTEGRATED BOWSPRIT

The X5⁶ has an integrated carbon bowsprit as standard, providing attachment point for asymmetric spinnakers with the stainless steel anchor arm fitted below.

The innovative stem design in the hull allows the code-0 and forestay furler to be positioned further forward, maximising J length and increasing upwind performance.





SPACIOUS SALOON

The well-proportioned saloon gives the yacht a spacious feel. Well-positioned handrails and good furniture placement ensure that it is always safe and easy to move around, no matter the sea conditions.

The central pouf seat can be converted into a coffee table and repositioned as required – this offers flexibility.



CHART TABLE

All layouts feature a large dedicated forward-facing chart table. The large chart table is perfect for navigation and offers good storage facilities. On the side of the chart table is a deep pocket, ideal for storing almanacs, binoculars etc.

The nav station is the yacht's communication centre as well as the main hub for its electrical systems, with DC switch panel and electrical breakers easily accessible.

Above the chart table a set of lockers allow a variety of navigation electronics to be fitted.



SOLAR PANELS

The X5⁶ can be fitted with optional solar panels which can be recessed into the coach roof teak, to provide a flush and fully integrated look.

Solar panels can help keep your batteries topped up and reduce generator hours when on long distance cruises.

LAYOUTS

The X5⁶ has a number of layouts available, primarily revolving around the choice of galley.

The galley is available in four options, a traditional closed galley and a modern open galley. Both closed and open galleys can be extended aft, which replaces the port aft head and offers greater storage space in the port aft cabin.

SAIL PLAN

The fractional sail plan is easy controllable. The standing rigging is solid rod rigging and the permanent backstay adjuster is hydraulic. A carbon rig with a taller P (mainsail luff) is optional.



OPTIONAL LAYOUT 1



OPTIONAL LAYOUT 2



OPTIONAL LAYOUT 3



OPTIONAL LAYOUT 4



Configure your own X5⁶ now



X5⁶



X5⁶ DIMENSIONS

LOA (including bow sprit)	17.25 m	56'6"
Hull Length	16.58 m	54'4"
LWL	14.94 m	49'0"
Beam	4.90 m	16'0"
Standard draft (T-keel)	2.90 m	9'6"
Shallow draft (L-keel)	2.50 m	8'6"
Deep draft (T-keel)	3.30 m	10'6"
Ballast (standard)	7,200 kg	15,875 lbs
Displacement (light)	18,100 kg	39,903 lbs

ENGINE/TANKS

Engine (standard)	81 kW	110 HP
Fuel tank	500 Ltr	130 Gal (US)
Water tank	600 Ltr	160 Gal (US)
Additional tanks (fuel or water)	90 + 130 Ltr	238 + 34.3 Gal (US)

SAIL AREAS

Mainsail	97 m ²	1,044 ft ²
88% Self tacking Jib	60 m ²	645.8 ft ²
Asymmetric spinnaker	256 m ²	2,756 ft ²
106% Overlapping Genoa	572 m ²	616 ft ²
Asymmetric spinnaker	230 m ²	2475 ft ²



WHAT IS XCRUISING?

A SPACIOUS AND LUXURIOUS X-YACHTS CRUISER

DEDICATED LONG DISTANCE CRUISING YACHTS WITH ENJOYABLE HANDLING UNDER SAIL.

The Xc range contains X-Yachts' more cruising oriented models. The range has been developed and modified over the years, and presently two models are on the program: The Xc 50 and the Xc 47, the latter being launched in January 2024.

We have implemented many improvements based on feedback from a fleet of over 300 Xc-yachts worldwide. Just like our Pure X range and Xp range, the Xc models are now built using epoxy infusion. The hulls are post-cured to improve structural properties of the composite. Added value to this production method is weight reduction.

The exterior includes optional jib self-tacker, composite bowsprit and our anniversary 2019 colour scheme. Interior upgrades include Nordic oak furniture and new upholstery types, cushion design and new interior fittings throughout. System upgrades include new tank displays showing remaining volume in litres and upgraded ambient lighting.

Xcruising is an evolving concept of dedicated long distance cruising yachts with enjoyable, shorthanded-friendly handling under sail and luxurious amenities below deck – all built for real offshore sailing.



Xc 47



Xc 50



BLUEWATER CRUISING IN ELEGANCE AND COMFORT

The Xc 47 marks the beginning of a completely new generation of Xcruising. Building on the success of the existing Xcruising range that started with the launch of Xc 45 in 2008 and now adding further focus on long distance Blue Water Cruising, comfort, safety and ease of use, this elegant bluewater cruiser has been created.

The cockpit layout has been designed with the shorthanded cruising crew in mind, mainly by making handling of all lines possible from the helming position. Four winches – two on each side – are positioned in front of the wheels. All relevant trim lines are led in channels under the deck from the mast to the steering position, with jammers reachable for the helmsman.

Near the transom, a large aft deck accommodates a comfortable full-width seating area behind the wheels, as well as a nice sunbathing area. As it should be on a true offshore yacht, the cockpit is deep, well protected, and with a closed transom.

The hull lines have maintained the deep V-shaped bow sections, generous rocker, and higher stern overhang from previous Xc models, providing the well-known comfortable seagoing characteristics. Furthermore, the hull features modern, wider stern sections, incorporating a subtle soft chine that provides extra form stability and improved reaching performance. Also, this design provides a great feel of space in the aft cabins.

The hull is built in a full vacuum infused epoxy/e-glass sandwich, with our famous signature steel frame. Areas exposed to high loads are reinforced with carbon fibers, a part of making the yacht stronger and stiffer without adding excess weight or increased structural geometries in the interior.

The freeboard features hull windows stylishly shaped with a unique X-signature reference, letting light inside the cabin, and offering an incredible view to the outside scenery from the saloon sofa and from each berth.

Xc47

INTERIOR

The first thing most people will notice when looking at the lines, is the shape of the superstructure. We have introduced an elegantly raised superstructure over the saloon area. This provides a better view of the surroundings when under deck. Also it provides more natural light and an opportunity for multilevel floors. This allows the vast majority of technical installations to stay amidship below the floorboards – which increases the usable storage areas throughout the interior.

The efficient storage volumes hidden behind the sturdy, yet elegantly crafted surfaces of the interior, enables the Xc 47 to carry provisions for long periods of time, with the crew enjoying the lifestyle of true blue water cruising.

Danish design and architecture are famous for its clean and timeless style, and X-Yachts has always been a part of this tradition. X-Yacht owners often talk about a special X feeling, something that greets you every time you step on board. We know this feeling, and for us it's a constant process to refine and enhance it each time. Looking at the Xc 47, we are proud of how far we have come.







STANDARD LAYOUT



Read more
about Xc 47

Xc47



Xc 47 DIMENSIONS

LOA (including bowsprit)	15.21 m	49'11"
Hull Length	14.30 m	46'11"
Waterline Length	13.17 m	43'2"
Beam (max)	4.56 m	15'0"
Draft - Shallow	2 m	6'7"
Draft - Std	2.3 m	7'7"
Air Draft (not including Windex)	23.0 m	75'6"
Ballast - Std	5490 kg	12103 lbs
Displacement - Light	14500 kg	31967 lbs

ENGINE/TANKS

Engine Diesel	80 kW	109 hp
Fuel Tank - Std	500 ltr	132 gal(US)
Water Tank - Std	640 ltr	169 gal(US)

SAIL AREAS

P = 19.00 M, E = 6.23 M, IG = 19.90 M, J = 5.34 M

Mainsail (aluminium mast)	68.0 m ²	732 ft ²
Genoa (106%)	55.4 m	596 ft ²
Asymmetric spinnaker	180 m ²	1937 ft ²



Xc 50



LONG DISTANCE CRUISING STYLE

Design details include minimalist flush opening deck hatches, smart interior recessed teak stripes, stylish lighting, and a choice of bimini and sprayhood options.

The innovative Xcruising folding transom includes additional features: A hinged life raft storage compartment to starboard, and an extra storage compartment to port for a stern anchor or flammable materials such as diesel cans. The centre of the transom folds down electrically to form a bathing platform – with optional davits for a tender.

The Xc 50 is easily sailed short-handed with halyards led under-deck aft to self-tailing winches (including electric options) and a central fixed cockpit table with storage box and a console for navigation instruments.

The sail plan has been designed specifically for long distance cruising, and includes a 106% overlapping jib and 94% self-tacking non-overlapping jib.

The Xc 50 will reach maximum hull speed in approximately 9 knots of true wind speed, when using the 140% overlapping genoa.

The mainsail comes with slab-reefing as standard. There is an option of in-boom furling.



The Xc 50 is the largest model in the Xcruising range and offers a wide array of custom options to allow owners to create an elegant, personalised luxury yacht.

MANY CHOICES

Standard options include an extra-large owner's cabin with ensuite heads, incorporating space for appliances such as a washing machine.

The Xc 50 can also accommodate a forepeak crew cabin and central master head. Aft there are two roomy double cabins, with the option of both ensuite. An extra spacious galley can be created with additional worktop space to port. This comes with the choice of a single aft head with shower. The galley features space for two refrigerators, optional microwave, and a Nespresso machine.

Interior finish choices may also be customised with a choice of contemporary and traditional materials, to complement the hand-finished furniture made by X-Yachts' own craftsman joiners.

Xc 50



**THIS YACHT IS DESIGNED FOR
SOMEONE WHO DREAMS OF
CRUISING BUT DOES NOT WANT
TO GO SLOWLY.**

Juan Pablo Del Solar Kolbach, Xc 50 owner, Chile



OPTIONAL LAYOUT 1

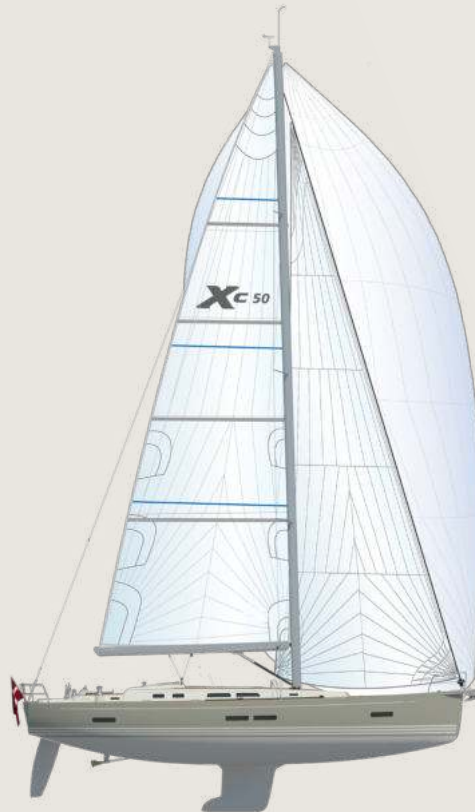


OPTIONAL LAYOUT 2



Read more
about Xc 50

Xc 50



Xc 50 DIMENSIONS

LOA (including anchor roller)	15.61 m	51'3"
Hull Length	14.99 m	49'2"
LWL	13.51 m	44'4"
Beam MAX	4.6 m	15'1"
Standard draft	2.35 m	7'9"
Shallow draft	1.95 m	6'5"
Ballast (standard)	7,220 kg	15,917 lbs
Displacement (light)	16,085 kg	35,461 lbs
Displacement (light)	18,100 kg	39,903 lbs

ENGINE/TANKS

Engine diesel	80.9 kW	110 HP
Fuel tank	614 Ltr	162 Gal (US)
Water tank	808 Ltr	213 Gal (US)

SAIL AREAS

Mainsail	70.9 m ²	763 ft ²
106% Genoa	56.7 m ²	610 ft ²
Self tacking jib 94%	50.3 m ²	541 ft ²
Spinnaker (asymmetric)	202 m ²	2,174 ft ²



WHAT IS XPERFORMANCE?

THE FOURTH GENERATION OF PERFORMANCE YACHTS

SLEEK, COMFORTABLE YACHTS
COMBINING WORLD-CLASS
PERFORMANCE AND CRUISING
AMENITIES

Xperformance is the fourth generation of our performance yachts. The Xp range presently consists of the Xp 44 and Xp 50. Based on experience and feedback, X-Yachts has optimized the Xp's to match the latest demands.

The Xp range offers sleek, comfortable yachts combining world-class performance and high grade cruising amenities.



Xp 44



Xp 50



DOUBLE THE FUN

The Xp 44 combines impressive performance with simplicity of handling. The Xp 44 was awarded Sailing World's "Yacht of the Year".

A highly optimised hull shape offers exemplary performance in a range of wind conditions, on all angles of sail, under both ORC and IRC handicap systems.

Key elements of the hull design include reduced upright beam and wetted surface area, while the transom shape ensures that as windspeed increases and the boat powers up, the overall waterline length increases for additional speed.

Additional performance is gained through the Xp 44's exceptional stiffness and high stability, achieved by a high ballast ratio with additional



X^P44

weight in the bulb keel, and lightweight structures thanks to epoxy infusion build processes.

The Xp 44 introduced the innovative Xperformance bow, with options including a carbon bowsprit to set asymmetric spinnakers, an ORC CRP bow cover plate and standard anchor attachments for hassle-free cruising.

Along with the rest of the Xp fleet, the Xp 44 has had her exterior styling revamped with new colour options, redesigned pushpit and pulpit, new window styles and updated waterlines. The Xp 44 is supplied with an aluminium rig as standard, and carbon mast and boom as an option, both developed in conjunction with leading sailmakers to create an efficient, easily adjustable sail plan.

The Xp 44 also carries multiple halyard options to allow owners to optimise their boat for racing or cruising, whether inshore or offshore. Standard deck features include a below deck furling drum, low friction racing blocks, and large self-tailing winches (powered winches optional).







INTERIOR

The Xp 44 interior is offered in a three-cabin layout with exemplary use of light and space. Ample natural light from the flush-mounted hatches and opening portlights creates a welcoming space throughout. A choice of high-quality interior surfaces allows owners to create an interior that is both elegant and practical.

The galley is arranged in an L-shaped configuration for safe working at sea. A gimballed two-jet gas cooker and cool box are fitted as standard. Options include a three-jet cooker with oven and grill, additional 65-litre fridge and microwave oven.

The saloon table also incorporates concealed storage for bottles and similar items.

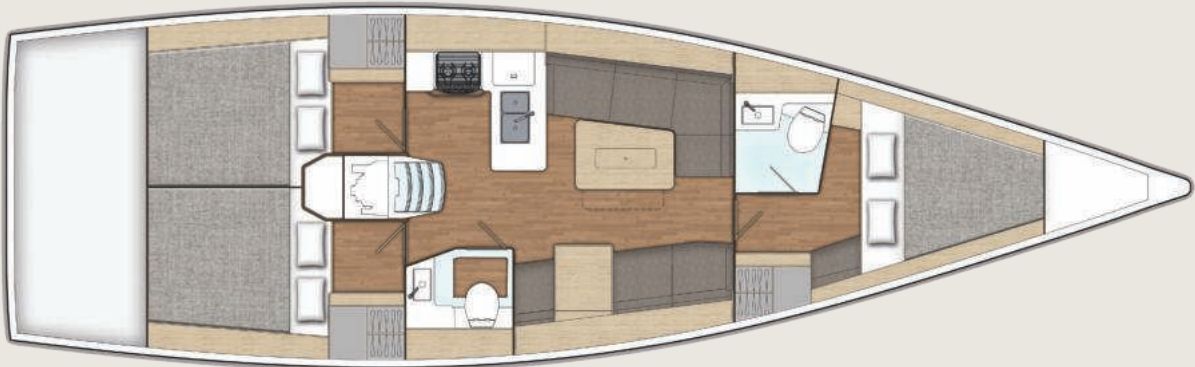


LAYOUT OPTIONS

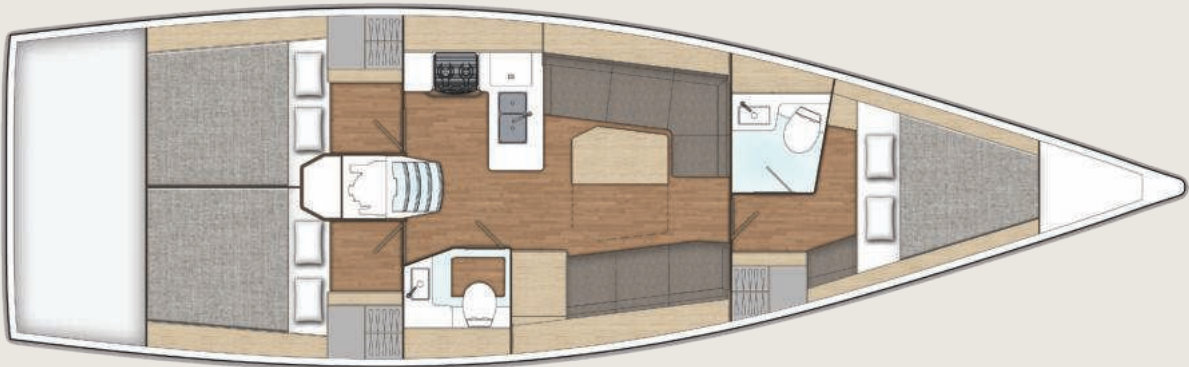
The Xp 44 also introduced the Xp range's adaptable new sliding navigation station, supplied as standard. This allows for additional seating or a forward-facing chart table. It is also offered with a fixed aft-facing chart table option and wooden galley.

The layout includes symmetrical double aft cabins, a forward cabin with ensuite heads, L-shaped galley, additional heads accessible from the saloon, and spacious seating area around the saloon table.

Flush-mounted hatches and stylish LED lighting create a bright and welcoming space – day or night.



OPTIONAL LAYOUT 1



OPTIONAL LAYOUT 2



Configure your own Xp 44 now

XP 44



Xp 44 DIMENSIONS

LOA (including anchor roller)	14.25 m	46'9"
Hull Length	13.29 m	43'7"
LWL	11.89 m	39'0"
Beam	4.07 m	13'4"
Standard draft	2.30 m	7'7"
Deep draft	2.65 m	8'8"
Ballast standard	3,850 kg	8,488 lbs
Displacement (light)	8,650 kg	19,070 lbs

ENGINE/TANKS

Engine diesel	30 kW	45 HP
Fuel tank	200 Ltr	53 Gal (US)
Water tank	350 Ltr	92 Gal (US)

SAIL AREAS

Mainsail (Aluminium mast)	63.9 m ²	688 ft ²
Mainsail (Carbon mast)	65.8 m ²	708 ft ²
106% Genoa	48.2 m ²	519 ft ²
Spinnaker (all-purpose)	160 m ²	1,722 ft ²

ASPIRATIONAL SAILING

The Xp 50 is a high performance cruiser-racer which offers ease of handling and impressive pace. The longer waterline length of the Xp 50 allows additional cruising features to be incorporated, as well as increased straight-line speed.

In line with the rest of the Xp range, the 50-footer utilises epoxy infusion build processes for improved stiffness with reduced weight, a carbon keel structure for maximum safety and ultimate stability, and a precision moulded composite keel with iron fin and lead bulb giving a high ballast ratio.

A choice of standard aluminium or optional carbon rig packages, and standard or deep draft keels, allow Xp 50 owners to optimise their yacht for cruising or racing, short-handed or fully crewed, inshore, offshore or bluewater sailing.



EXTERIOR

The Xp 50 features the modernised exterior expression including the light grey side decks, new colour options, updated water lines and newly designed portlights. The pushpit, pulpit and stantation bases have also been redesigned to create a sleek new look. The 'T' keel and rudder sections have now been optimized for improved performance and to create a more pleasant helming experience.

The Xp 50 bow features a removable stainless steel anchor fitting, neatly integrated as standard below a removable GRP cowling. Alternative options include a carbon bowsprit with or without integrated anchor fitting, for setting large asymmetric and code sails with ease, or a flush cowling. A flush anchor deck hatch conceals a large 1500W anchor winch and also provides access to a separate sail locker with optional crew berth.

Concealed control lines run aft with a 'Maxi-style' mainsheet system for a clutter-free, functional and comfortable cockpit area. There is a choice of bimini and two-pole sprayhood with opening window, together with the Xp folding cockpit table for flexible entertaining space. Liferaft storage is integrated under the cockpit sole, while the transom garage accommodates an inflatable tender. The electrically operated transom door also forms a teak-topped bathing platform with stainless steel swim ladder.

Xp 50





Xp 50



LIGHT & SPACIOUS

The Xp 50 interior is dominated by a feeling of light and space thanks to the numerous skylights, the large coach roof windows and also thanks to its new oak finish on bulkheads and joinery. The imitation teak floorboard gives a new character to this very bright interior.

The Xp 50 hides an incredible amount of storage in overhead lockers along the entire cabin length, under sofas and in many very practical lockers.



The two large hull portlights in the saloon offer a great view of the outside scenery from the 6 people saloon sofa and the starboard bench.

The large U-shape galley offers safe and comfortable conditions to cook at sea and includes all the essential elements to make you feel like home: large top-loading fridge-freezer completed with an optional 85-litre front-opening fridge, a built-in microwave and a Corian worktop.



LAYOUT OPTIONS

Owners can choose between three different chart table options: A forward-facing dedicated navigation station, an aft-facing chart table with instruments hidden behind overhead locker doors, or a sliding module which offers the advantage of facing forward at sea while using very little space when not used. The Owner's cabin has been redesigned for the new version of the Xp 50. Both the feel of space and the storage capacity have been optimised to guarantee compatibility with a cruising program. The berth is hiding large amounts of organised storage, accessible via drawers and lifting mattress. Larger window apertures in all cabins provide even more light and visibility.



OPTIONAL LAYOUT 1



OPTIONAL LAYOUT 2



OPTIONAL LAYOUT 3



Read more
about Xp 50

Xp 50



Xp 50 DIMENSIONS

LOA (including anchor roller)	15.78 m	51'9"
Hull Length	14.99 m	49'2"
LWL	13.31 m	43'8"
Beam	4.43 m	14'6"
Standard draft	2.65 m	8'8"
Deep draft	3.00 m	9'10"
Ballast standard	5,600 kg	12,346 lbs
Displacement (light)	13,600 kg	29,983 lbs

ENGINE/TANKS

Engine diesel	59 kW	80 HP
Fuel tank	300 Ltr	79 Gal (US)
Water tank	550 Ltr	145 Gal (US)

SAIL AREAS

Mainsail (Aluminium mast)	876 m ²	9430 ft ²
Mainsail (Carbon mast)	896 m ²	9650 ft ²
106% Genoa	64.3 m ²	6920 ft ²
Spinnaker (all-purpose)	210.0 m ²	2,368 ft ²