

# Silent 62

## 3-Deck



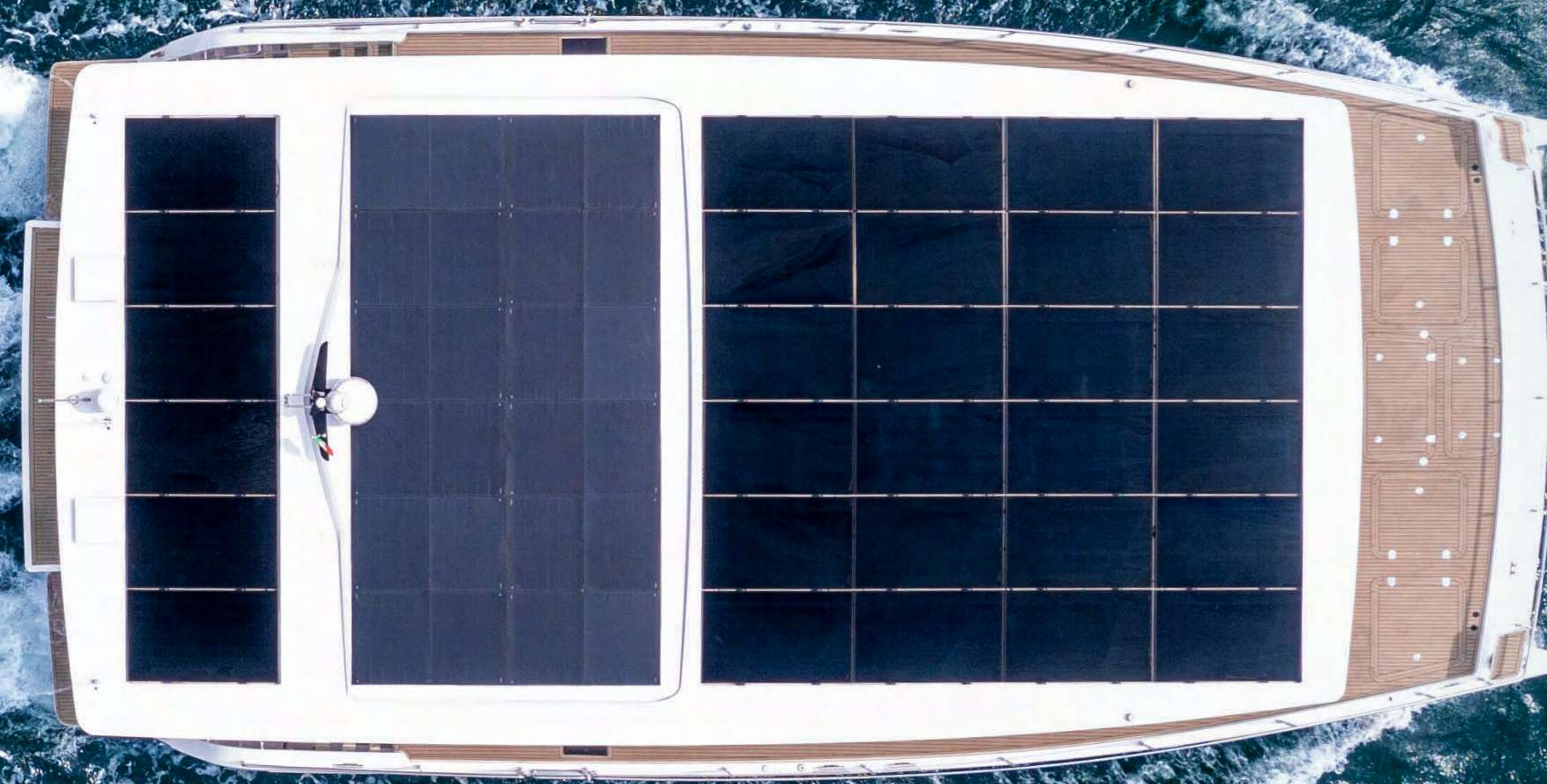
SILENT

1-3	Introduction
4	Silent 62 3-Deck
5	Specifications
6	<b>Silent 62 3-Deck open version</b>
7-8	Exterior open
9-13	Fly deck open
14-16	Floor plans & living space
17	<b>Silent 62 3-Deck closed version</b>
18-20	Exterior closed
21-23	Fly deck closed
24-26	Floor plans & living space
27-35	Main deck (open & closed)
36-42	Lower deck (open & closed)
43	Silent advantages
44	Silent assurances
45-47	Propulsion options
48	Kite sail system
49	Specifications & options

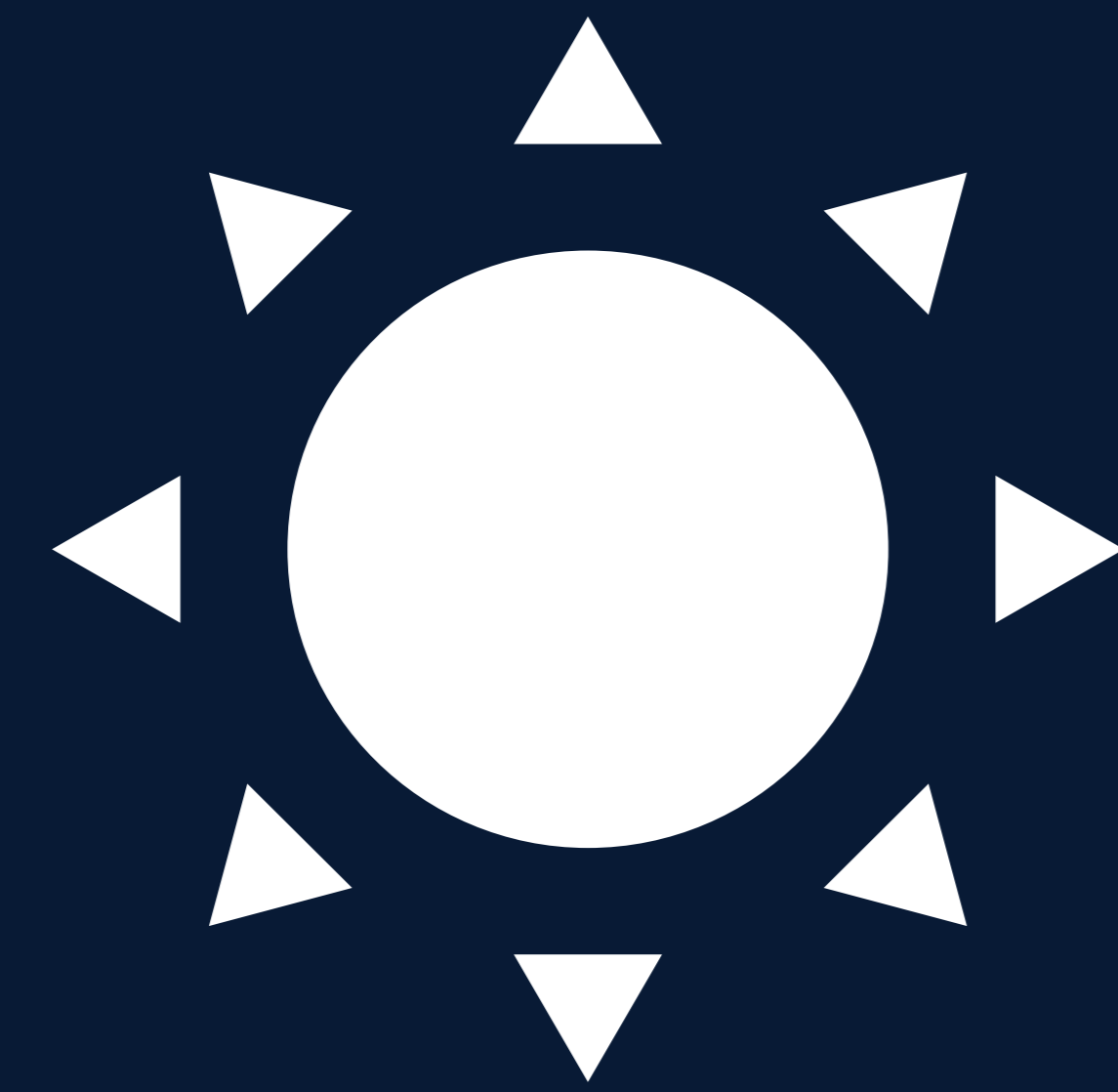


Create an independent and environmentally friendly yachting experience  
which combines the silent cruising of a sailboat  
with the luxury of a motor yacht.

THE FUTURE OF YACHTING IS SOLAR



Embrace the sound of silence.  
Preserve the purity of the ocean.  
Experience unprecedented levels of tranquility and pleasure.



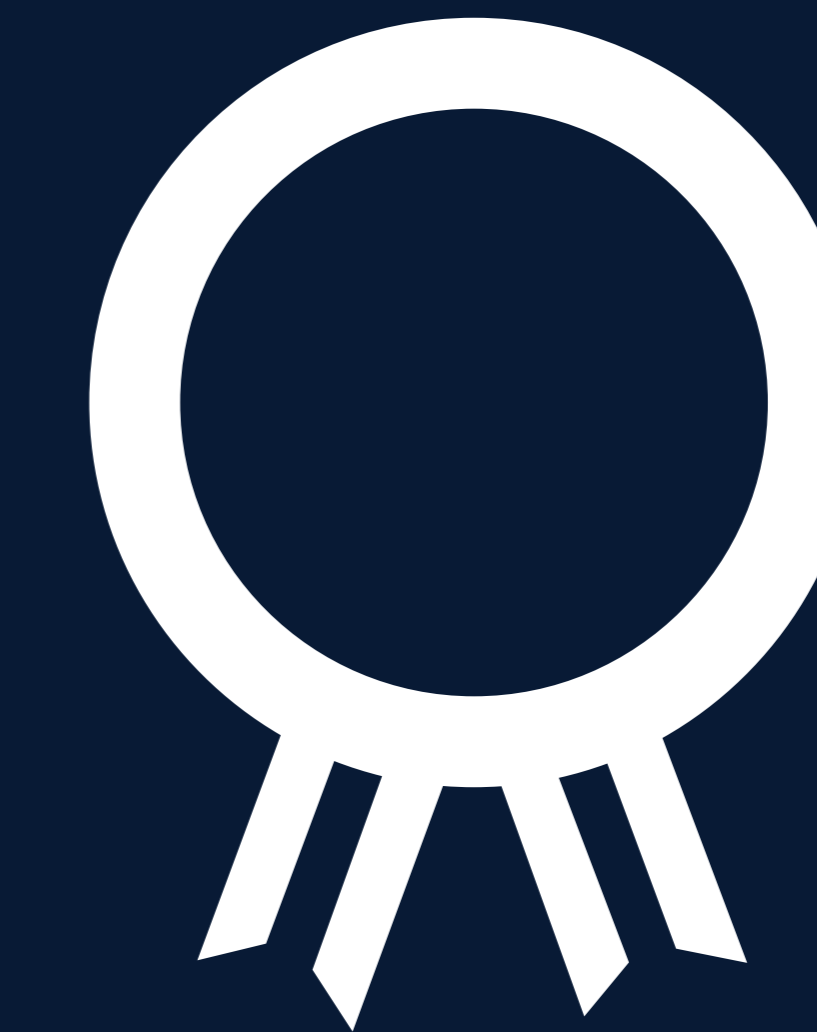
**SOLAR POWER**

for propulsion as well as all navigation, household & comfort appliances on board.



**WORLD RECORD**

2018 - Silent 64 first ever solar powered production yacht to cross the Atlantic ocean.



**AWARD WINNING**

technology 17x awards won honoring our drive for innovation since 2009.



# Silent 62

3-Deck

# SPECIFICATIONS



19 m (62 ft)	—————	Length overall
8.99 m (29.5 ft)	—————	Beam overall
0.93 m (3.9 ft)	—————	Draft
39 tons	—————	Light displacement
900 L to 2200 L	—————	Water
1000 L	—————	Wastewater
1000 L to 1900 L	—————	Fuel
17 kWp	—————	Solar panels
CE-A	—————	Certification
Trans-Ocean	—————	Range

Based on our bestselling Silent 60, it offers an additional third deck instead of the regular flybridge, while also increasing the overall length of the hull by two feet.

A fascinating combination of the superyacht flair of our flagship, the Silent 80 3-Deck, with the compact dimensions of our Silent 60. This creates a unique proposal by truly merging the best of both worlds. The third deck is available in three different versions: an open skylounge, a closed skylounge as well a closed owner's suite variation.

Furthermore, all version are available with a Front Exit on the main deck, which allows guests to directly step onto the bow through the salon.

Open version

# Silent 62

## 3-Deck



EXTERIOR  
OPEN



EXTERIOR  
OPEN



FLY DECK  
OPEN SKY LOUNGE 1



FLY DECK  
OPEN SKY LOUNGE 1



**FLY DECK**  
**OPEN SKY LOUNGE 1**



FLY DECK  
OPEN SKY LOUNGE 2

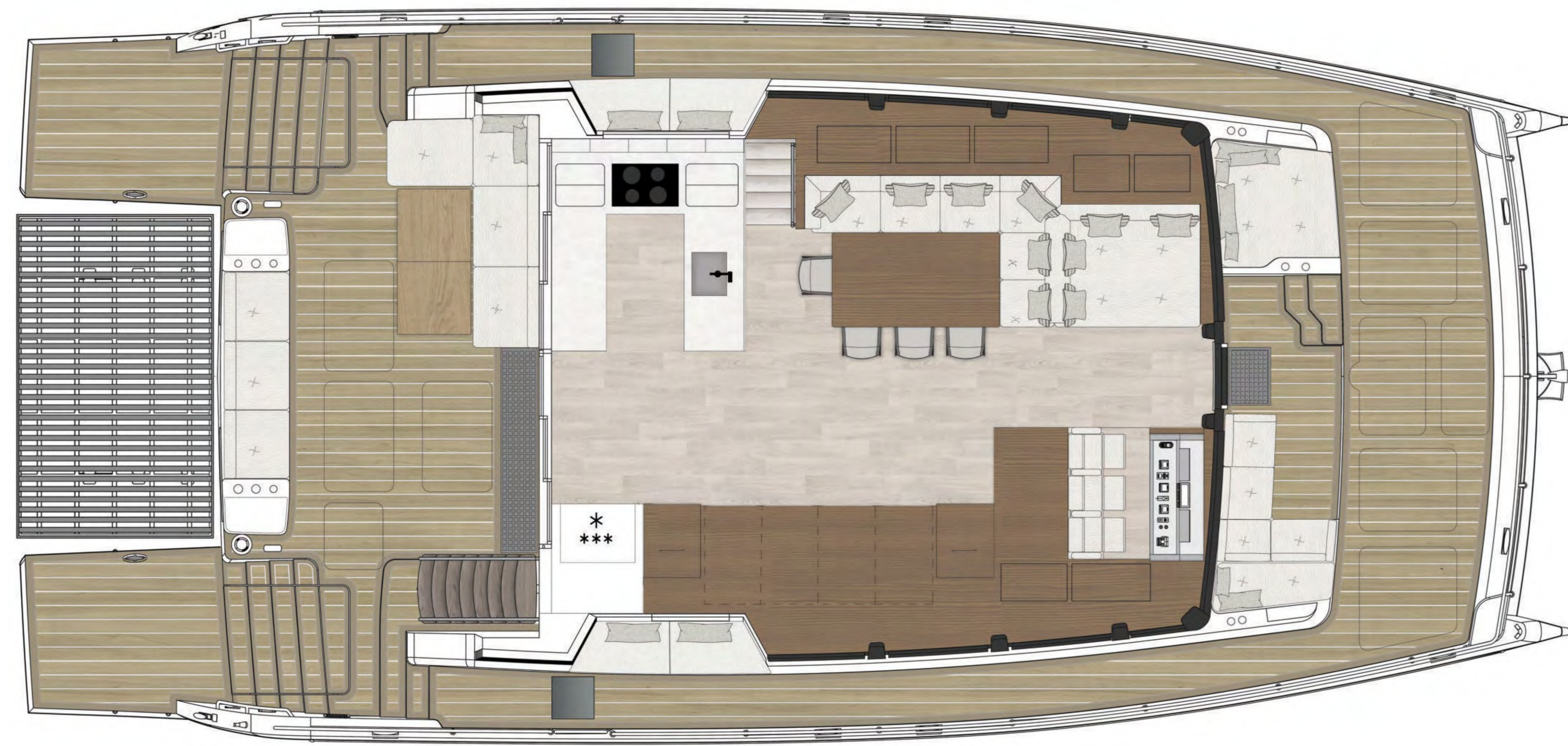


**FLY DECK**  
OPEN SKY LOUNGE 2

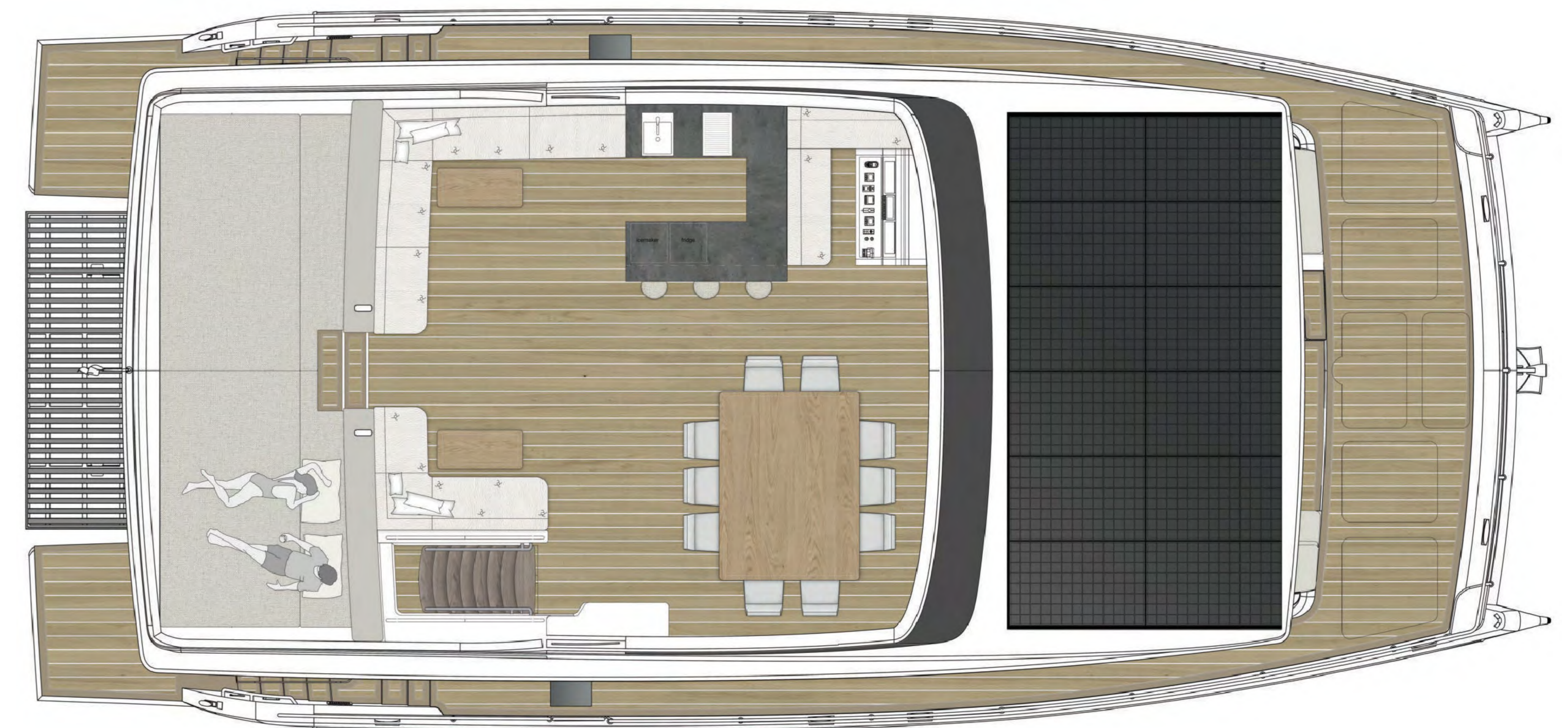


# FLOOR PLANS

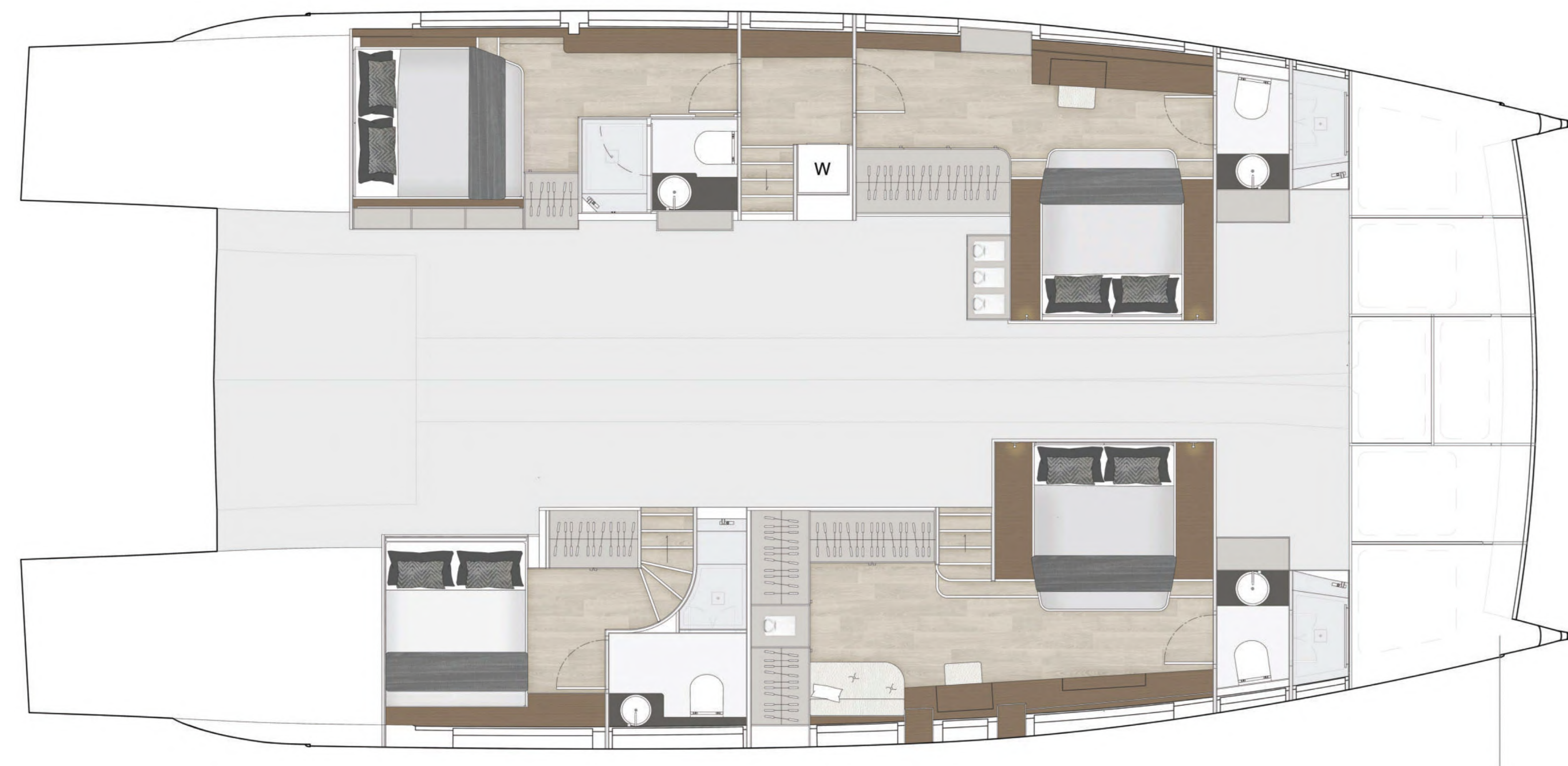
## OPEN SKY LOUNGE - FRONT EXIT



Main deck



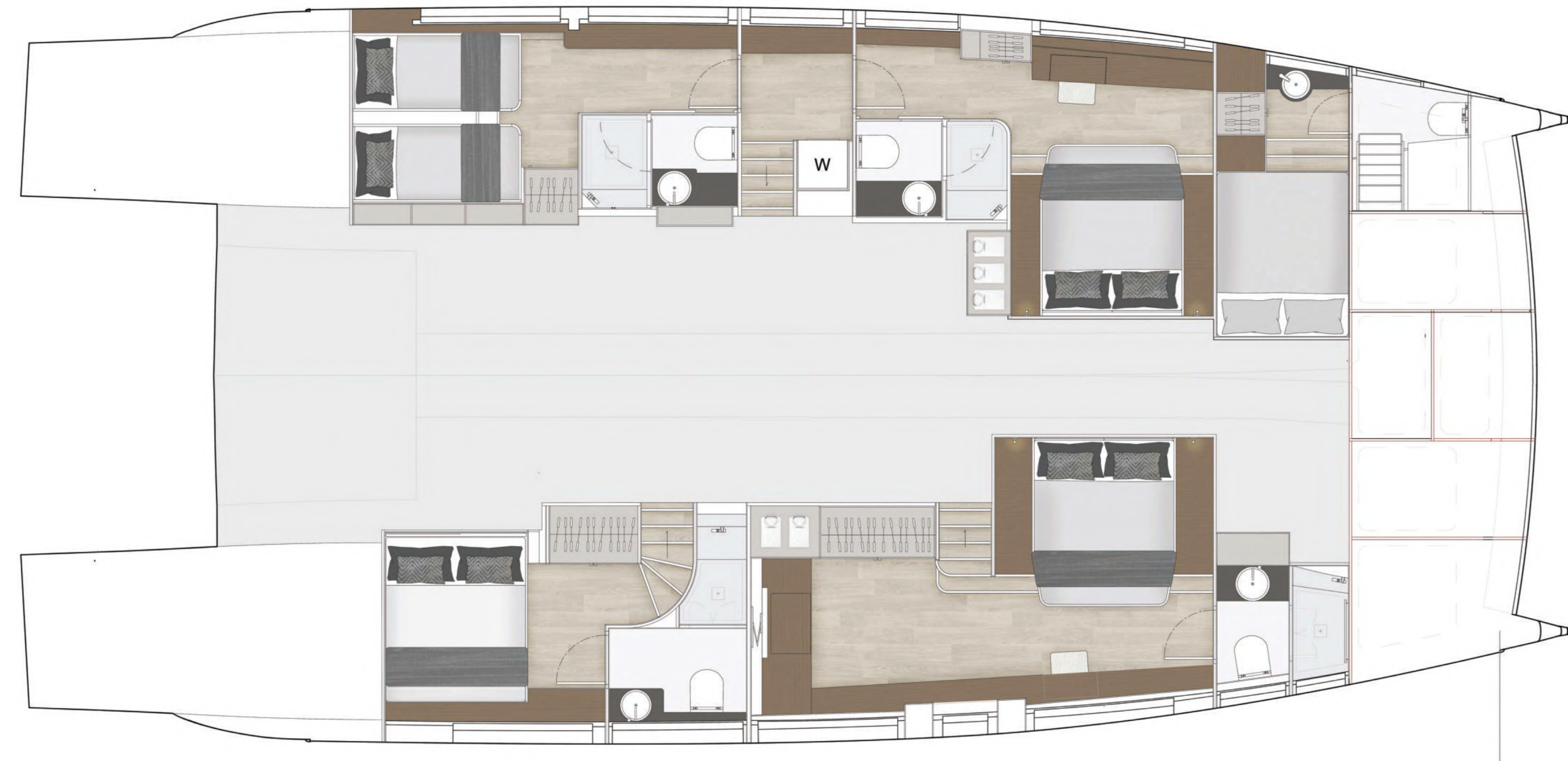
Fly deck



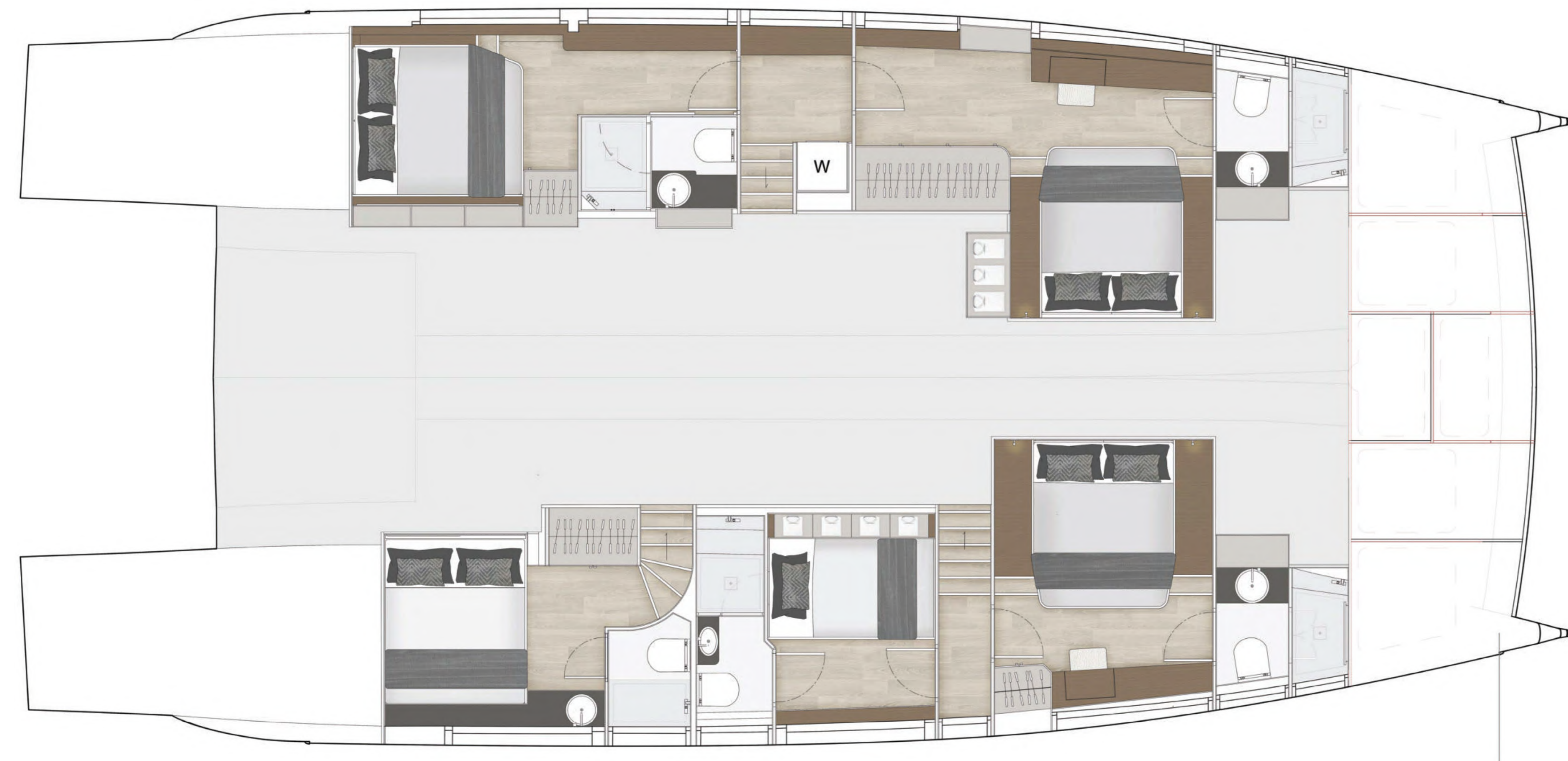
Lower deck  
4 Cabins / 4 Bathrooms



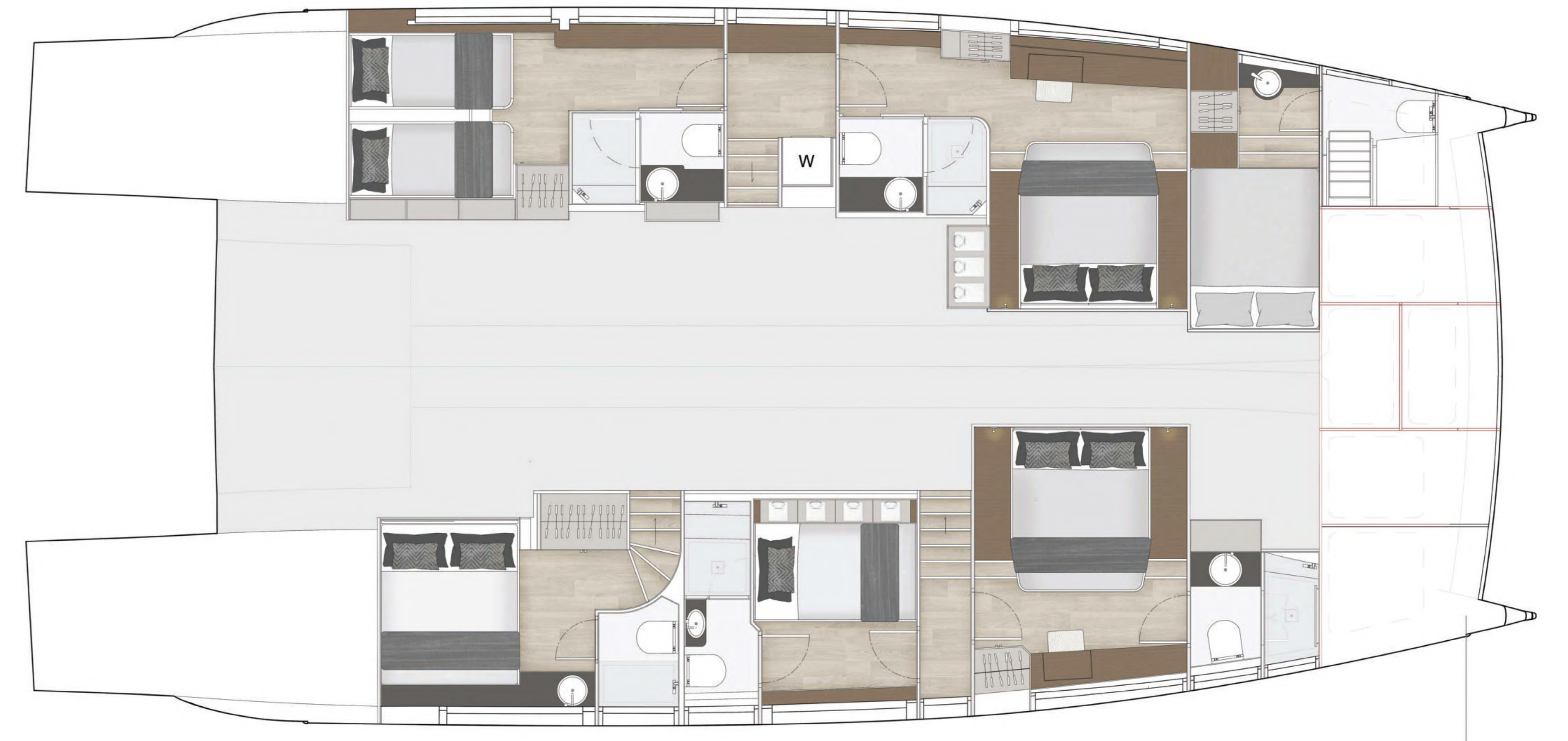
**FLOOR PLANS**  
CABIN VARIATIONS - FRONT EXIT



Lower Deck  
4+1 Cabins / 4 Bathrooms



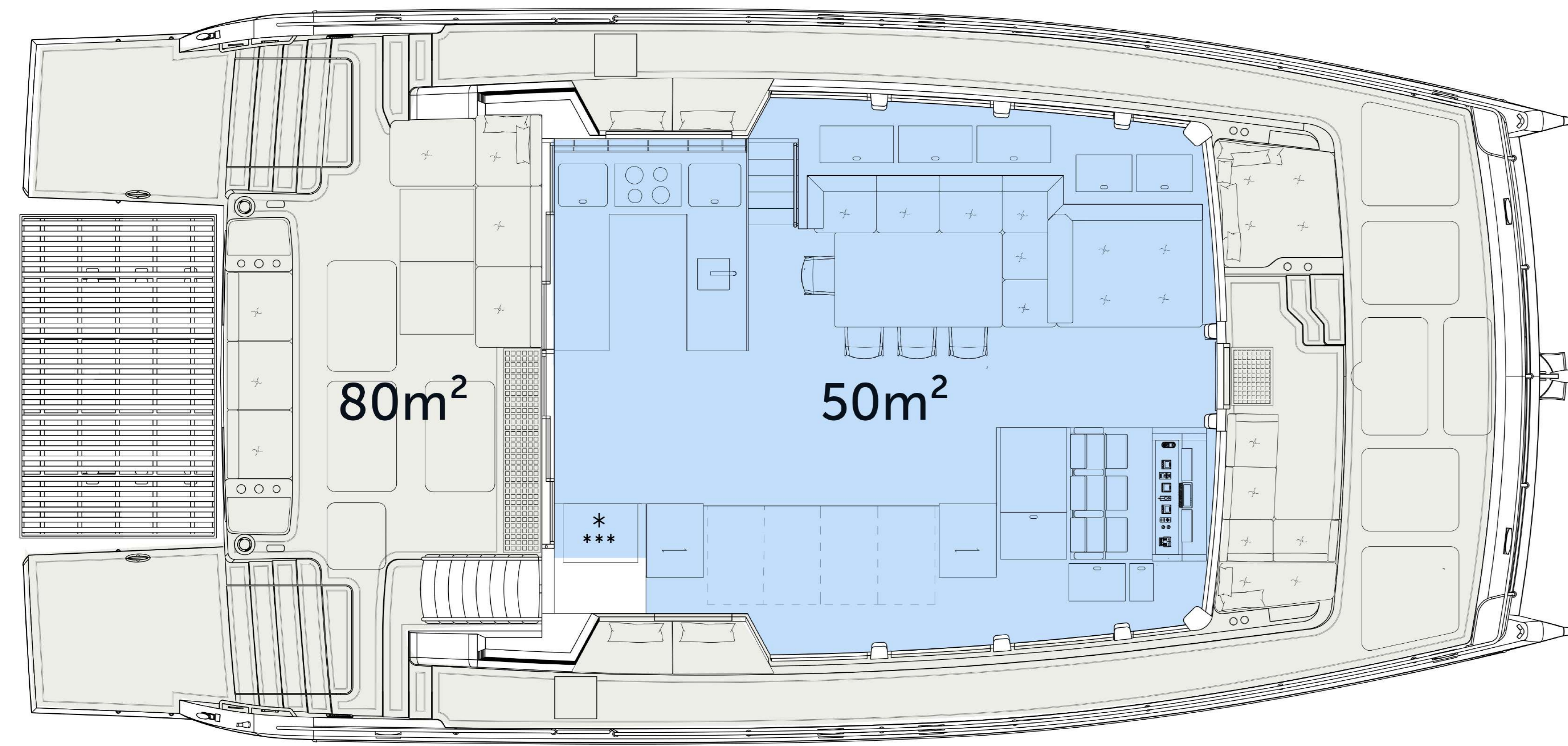
Lower Deck  
5 Cabins / 5 Bathrooms



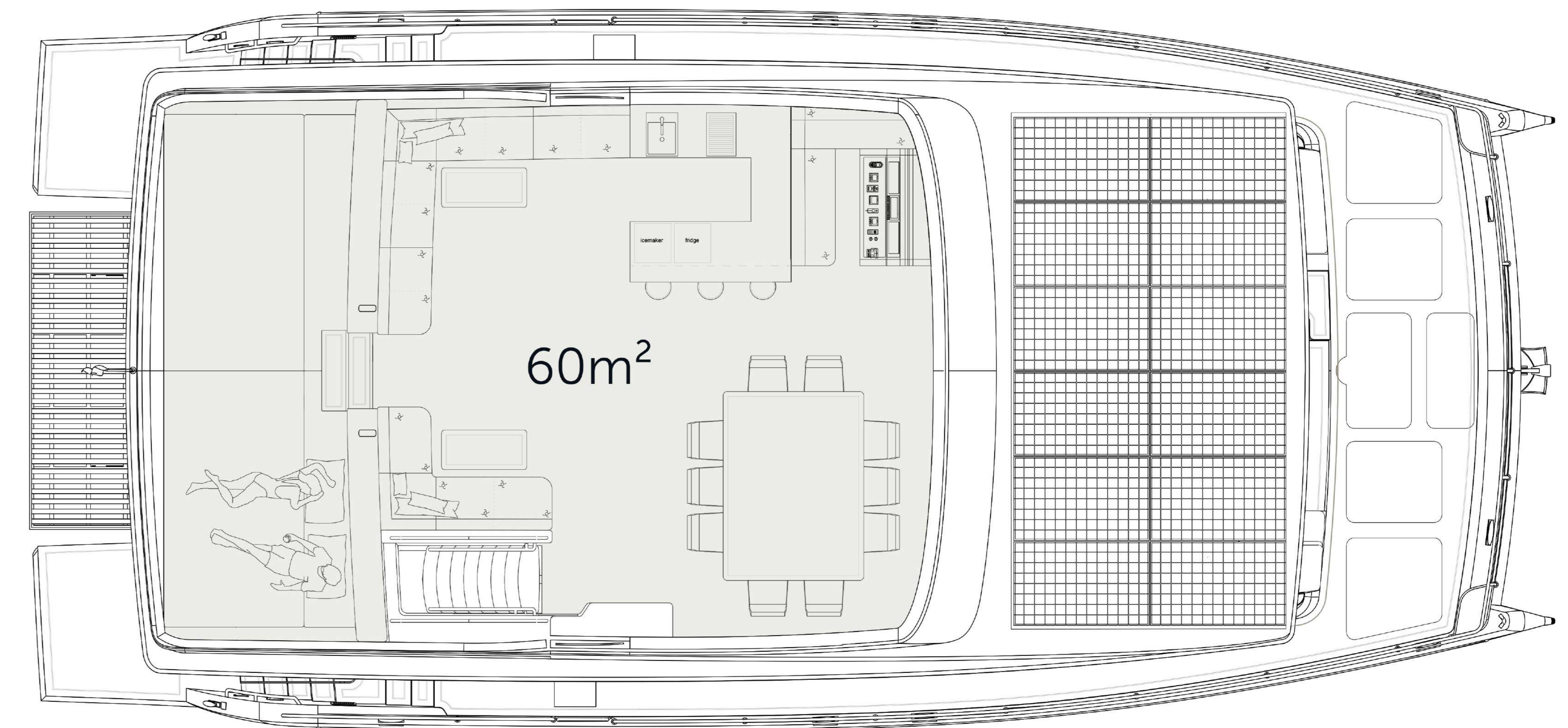
Lower Deck  
5+1 Cabins / 5 Bathrooms

# LIVING SPACE

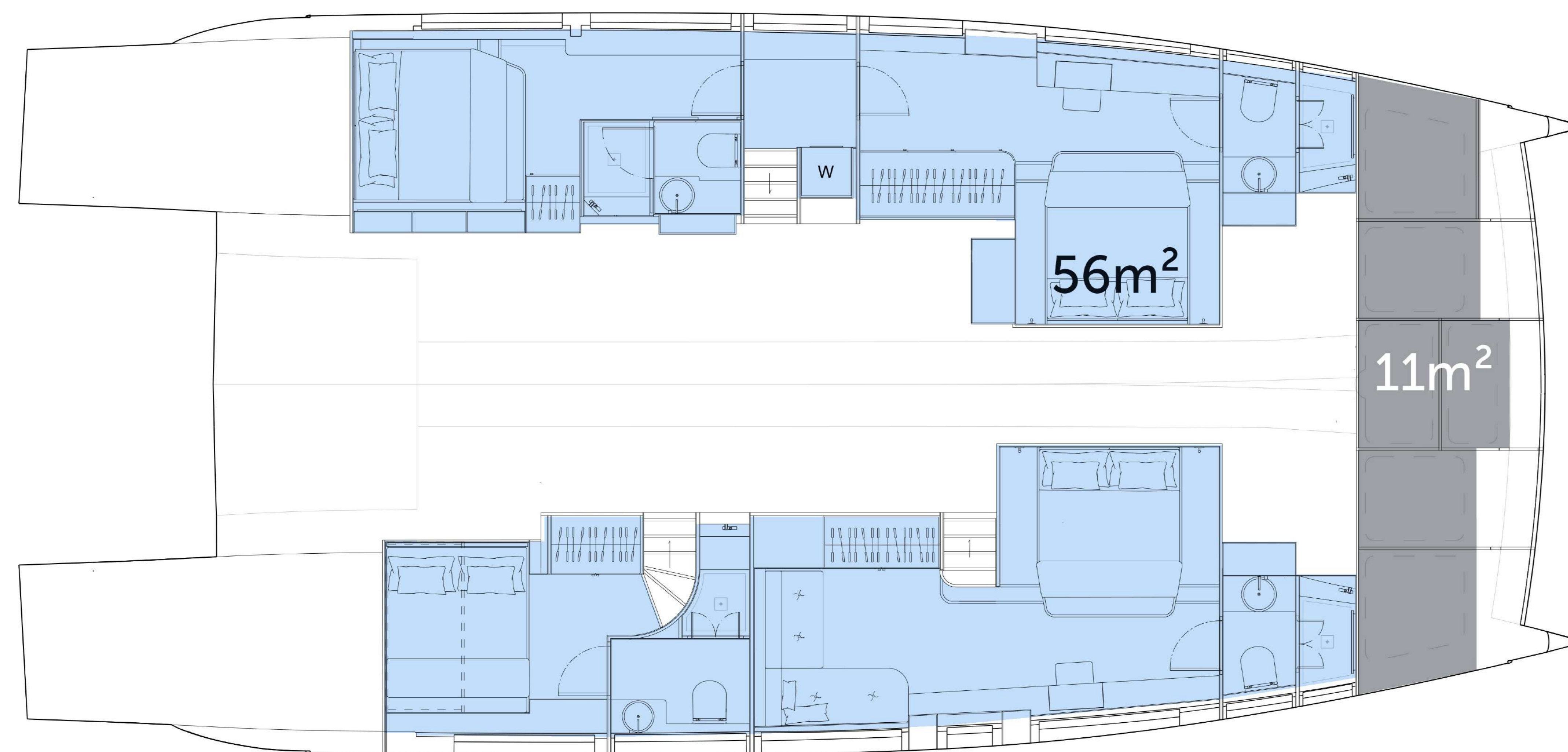
## OPEN SKY LOUNGE - FRONT EXIT



Main deck



Fly deck



Lower deck  
4 Cabins / 4 Bathrooms

Based on our bestselling Silent 60, it offers an additional third deck instead of the regular flybridge, while also increasing the overall length of the hull by two feet.

The closed version of the Silent 62 3-Deck establishes her character as a truly compact superyacht even further. Hereby, the closed third deck is available in two formidable options. A choice between a closed sky lounge or an exclusive owner's suite on the fly deck makes sure she can be customized towards your specific needs. Either way, the ambiance onboard is unmatched within her class.

Closed version

# Silent 62

## 3-Deck

EXTERIOR  
CLOSED



EXTERIOR  
CLOSED



EXTERIOR  
CLOSED



FLY DECK  
CLOSED OWNER'S SUITE



Owner's suite



Owner's bath



FLY DECK  
CLOSED OWNER'S SUITE



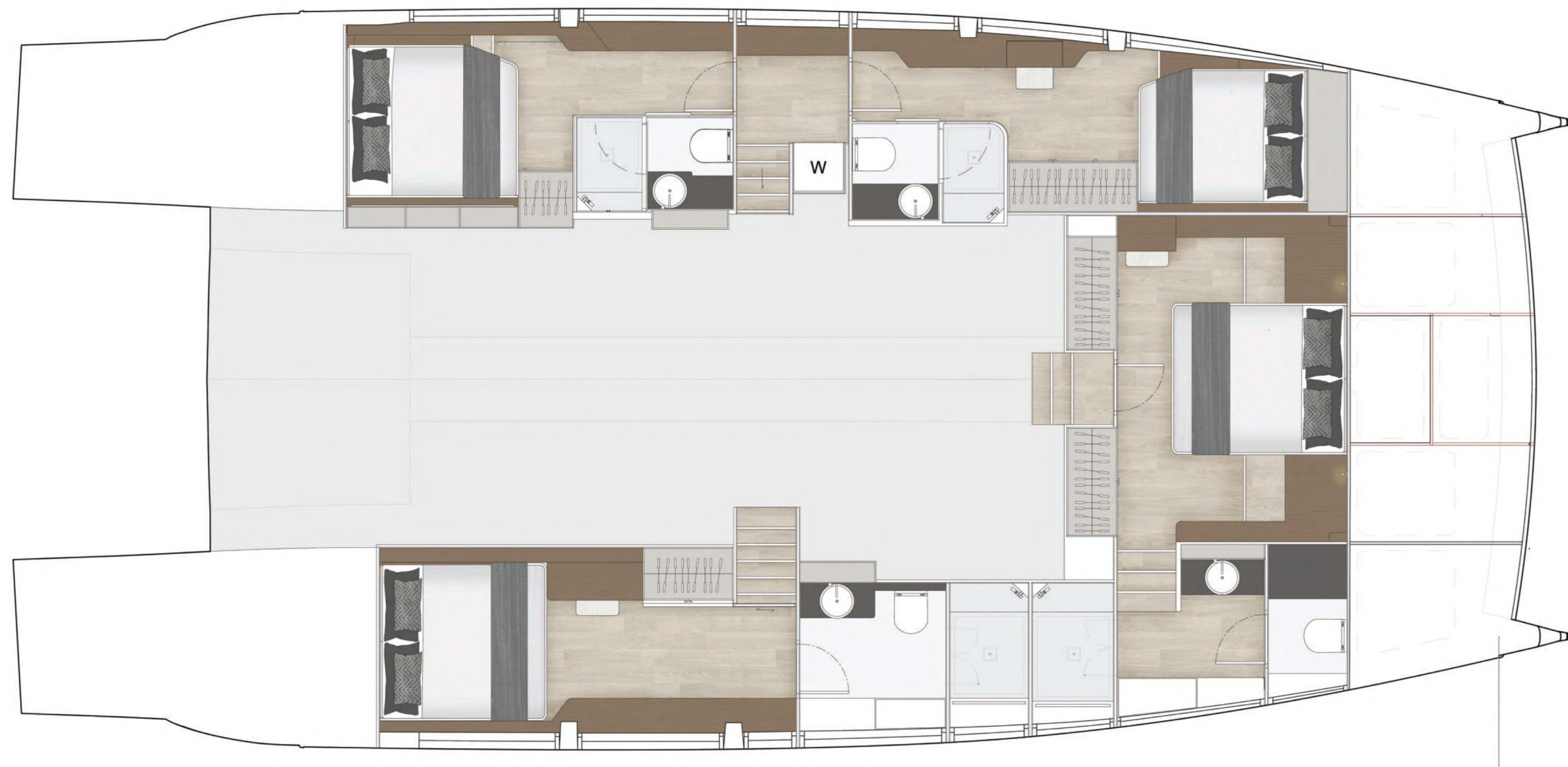
Terrace

# FLOOR PLANS

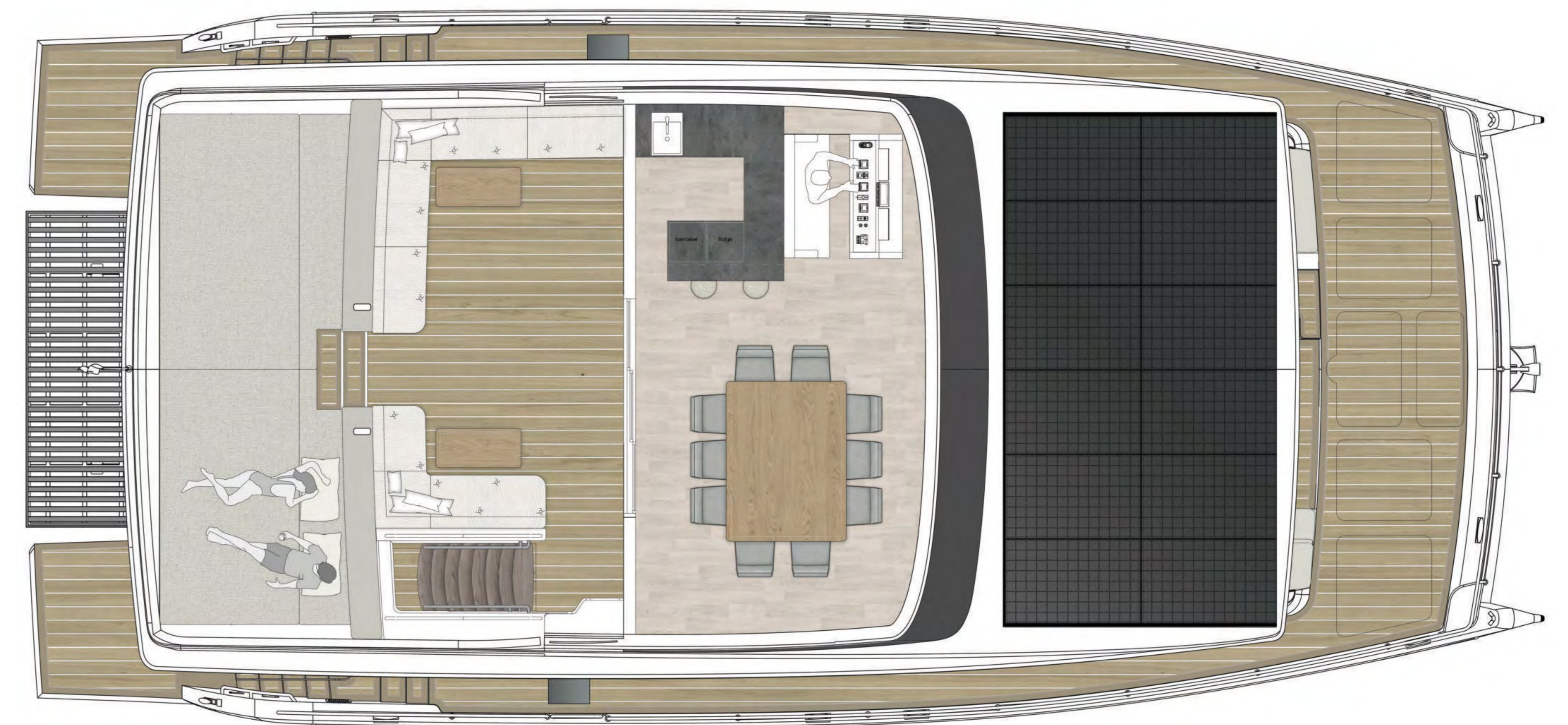
## CLOSED SKY LOUNGE - FRONT MASTER



Main deck



Lower deck  
4 Cabins / 4 Bathrooms



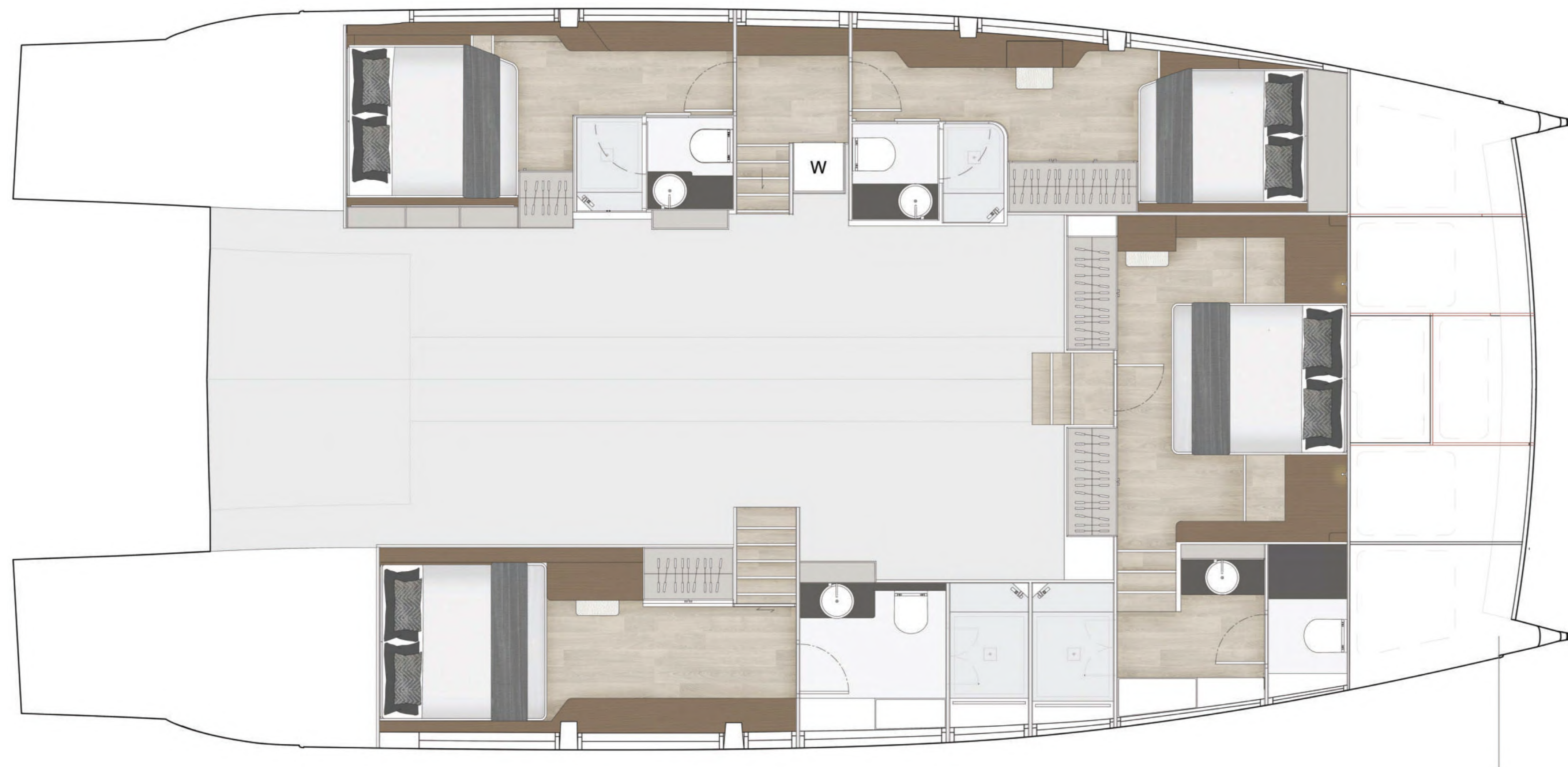
Fly deck

# FLOOR PLANS

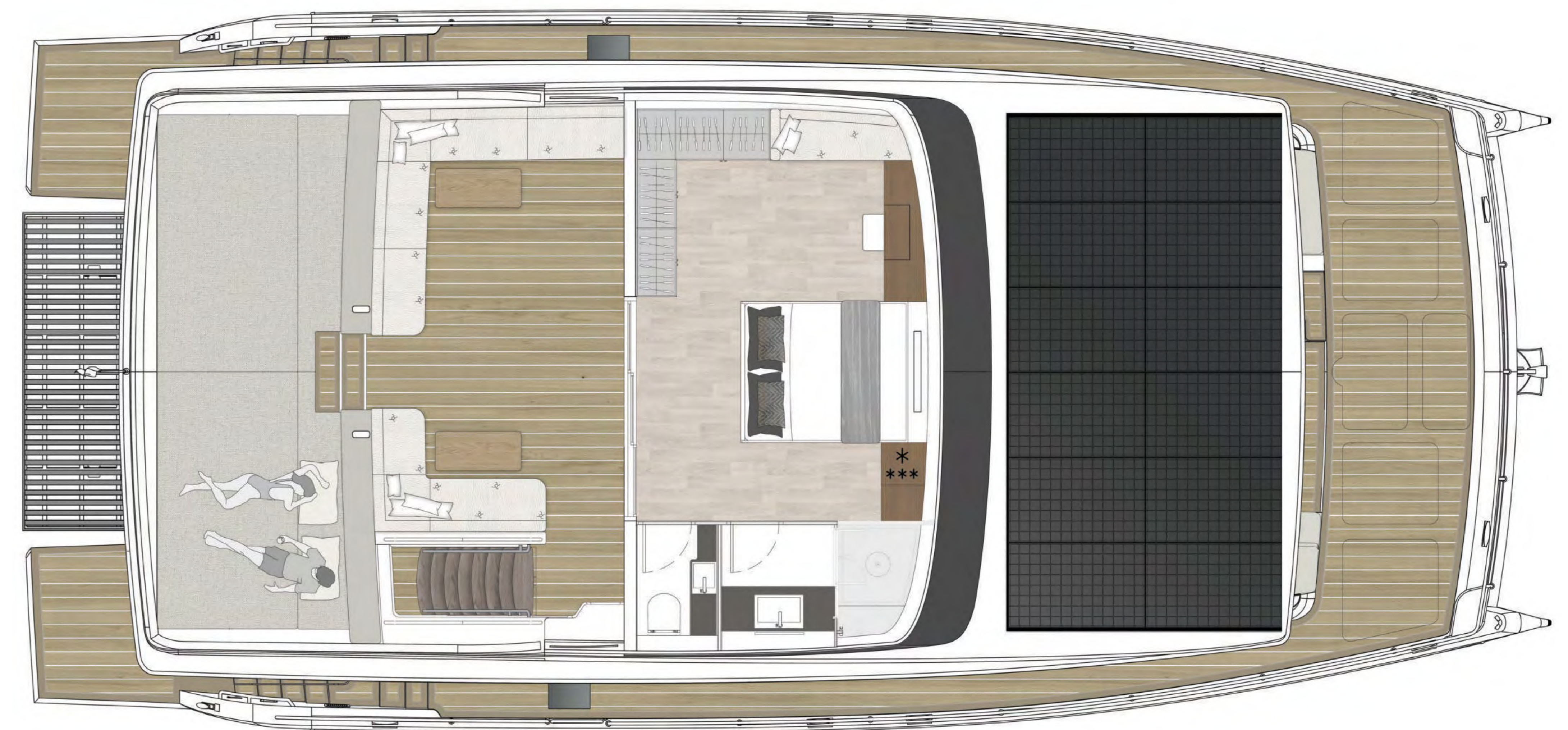
## CLOSED OWNER'S SUITE - FRONT MASTER



Main deck



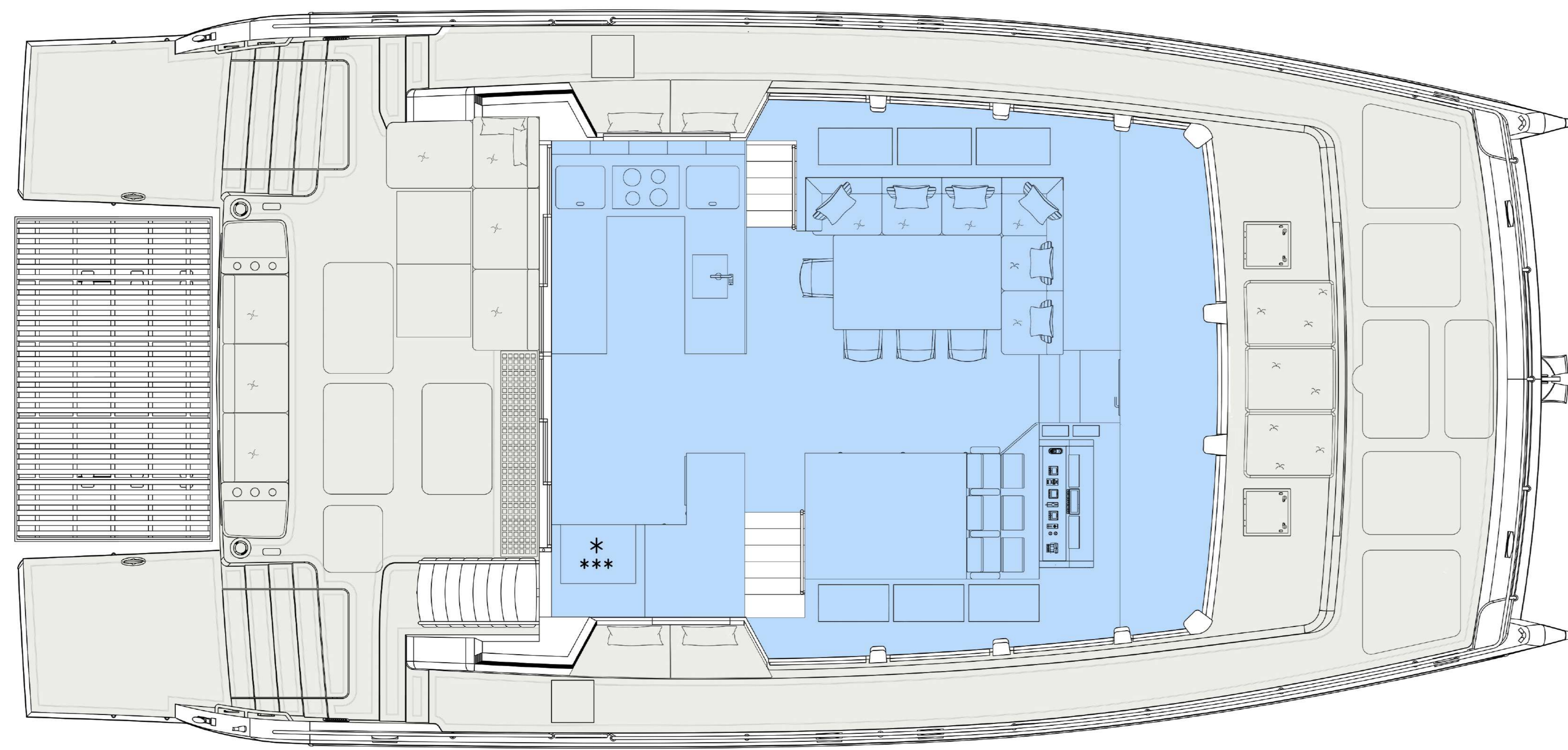
Lower deck  
4 Cabins / 4 Bathrooms



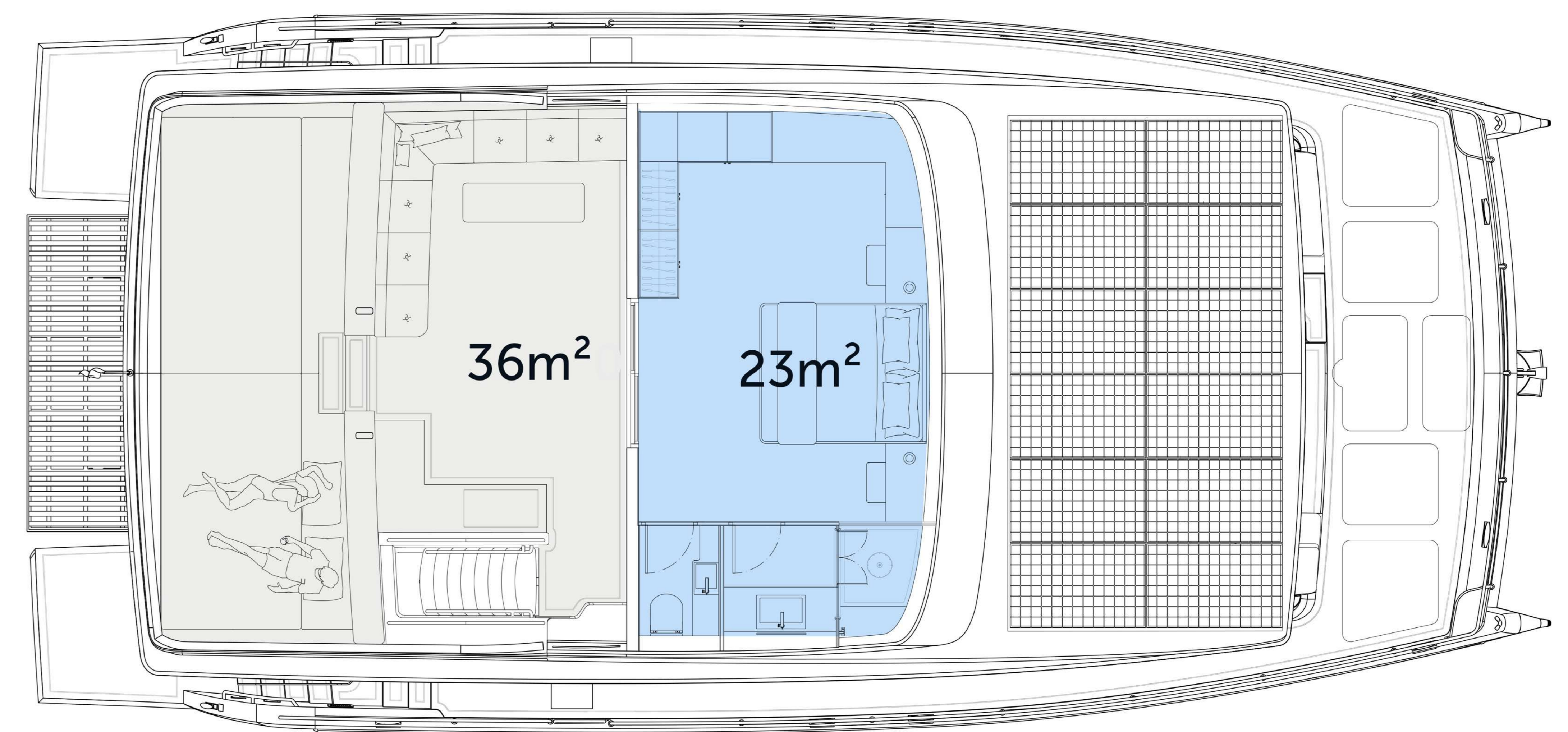
Fly deck

**LIVING SPACE**

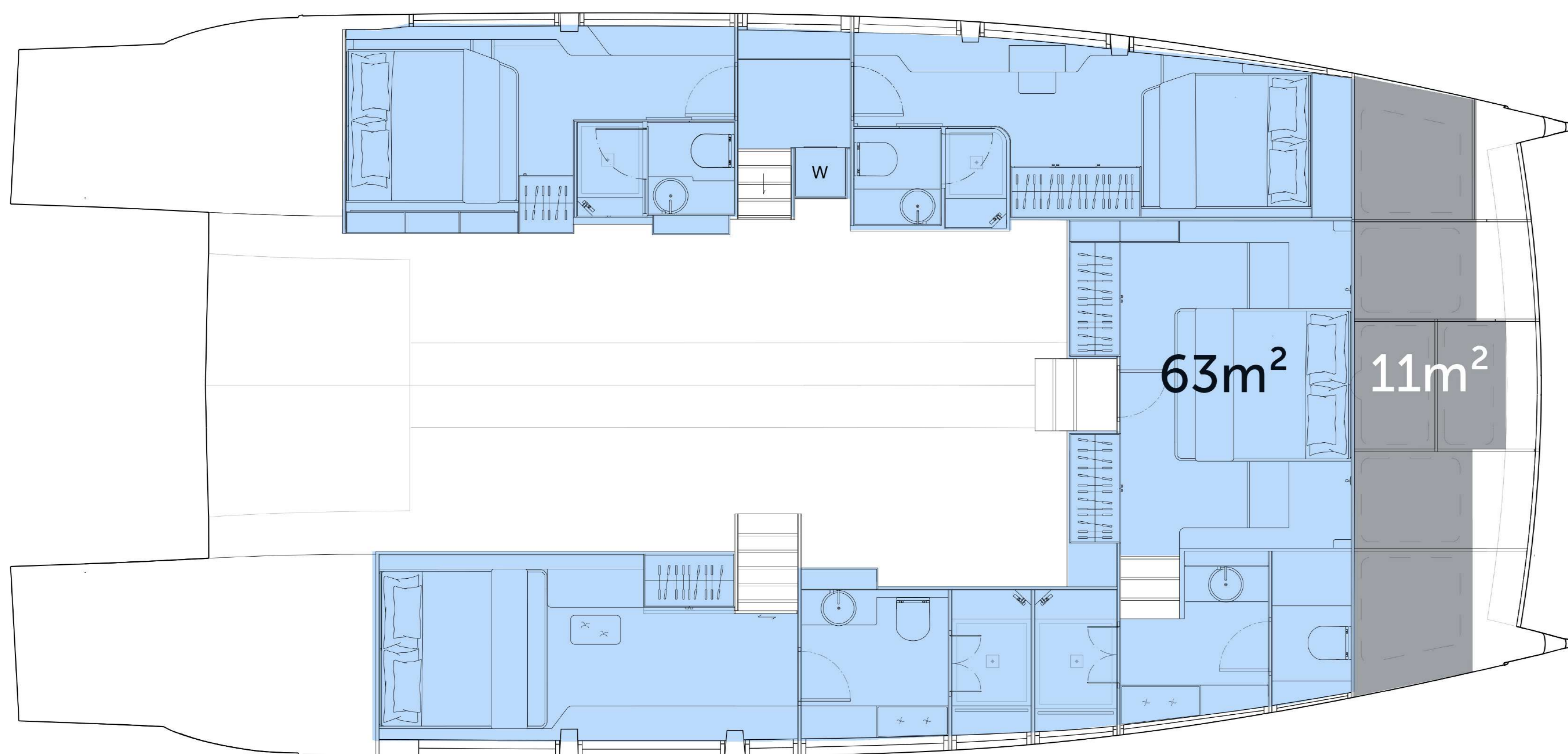
**CLOSED OWNER'S SUITE - FRONT MASTER**



**Main deck**



**Fly deck**



**Lower deck**  
**4 Cabins / 4 Bathrooms**



Cockpit

MAIN DECK



SILENT-YACHTS



Sidewalk



MAIN DECK  
FRONT EXIT



Bow

MAIN DECK  
FRONT MASTER



Salon



MAIN DECK  
FRONT MASTER



Salon

MAIN DECK  
FRONT MASTER

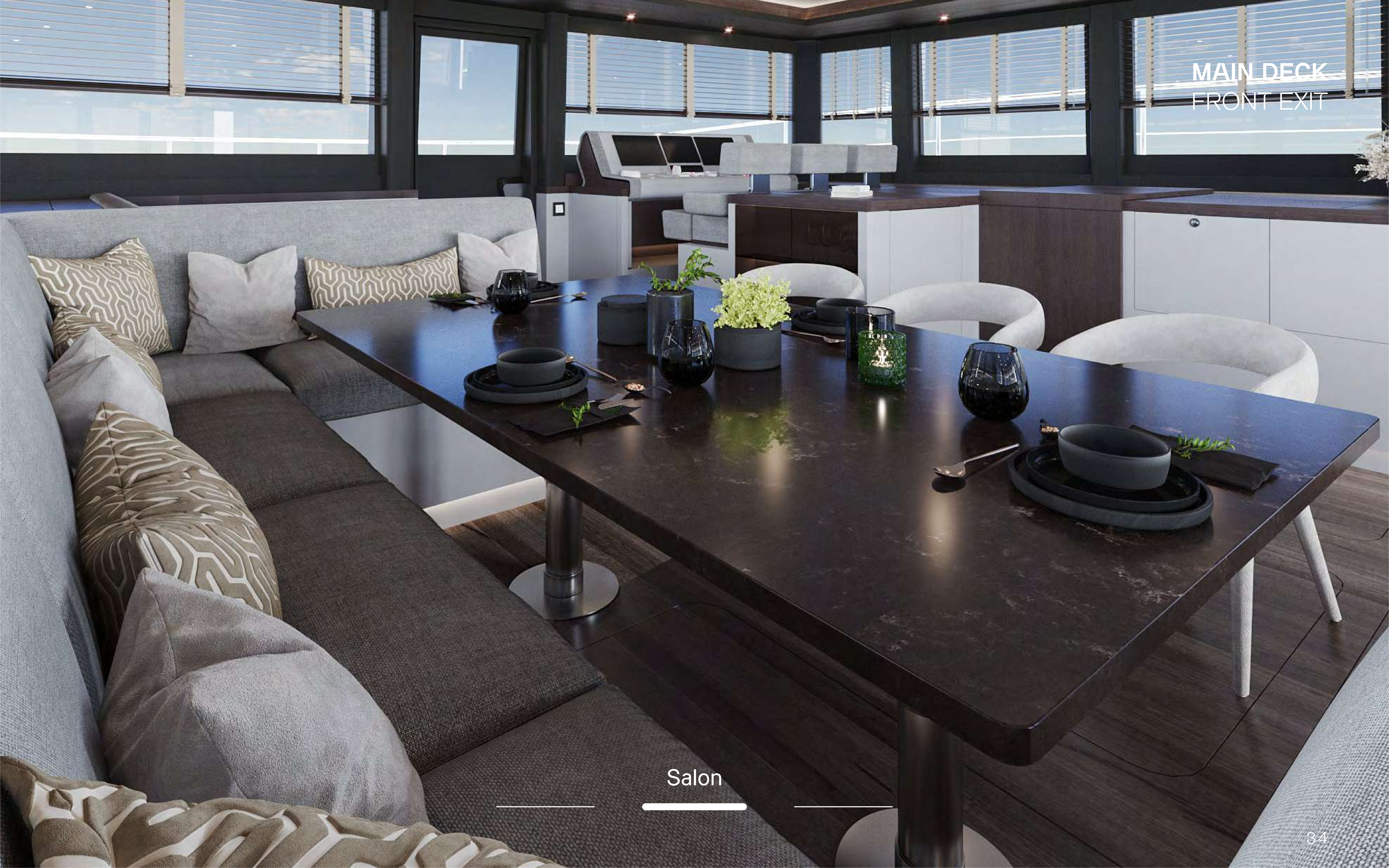


Galley



Salon

MAIN DECK  
FRONT EXIT



Salon



Galley

LOWER DECK  
FRONT MASTER



Master cabin

LOWER DECK  
FRONT MASTER



Master cabin

LOWER DECK  
FRONT MASTER



Master cabin



LOWER DECK  
FRONT EXIT

Master cabin

LOWER DECK  
FRONT EXIT



Master cabin

LOWER DECK  
FRONT EXIT

Master cabin

LOWER DECK  
FRONT EXIT



Master bath



UNLIMITED  
RANGE

ZERO  
EMISSION

NOISELESS  
CRUISING

VIRTUALLY NO  
MAINTENANCE

SAFEST MARINE  
PROPULSION SYSTEM



8 YEARS

WARRANTY  
BATTERY BANKS

25 YEARS

WARRANTY  
SOLAR PANELS

LIFETIME

WARRANTY  
E-MOTORS

CE-Ā

CERTIFICATION

TRANS-OCEAN

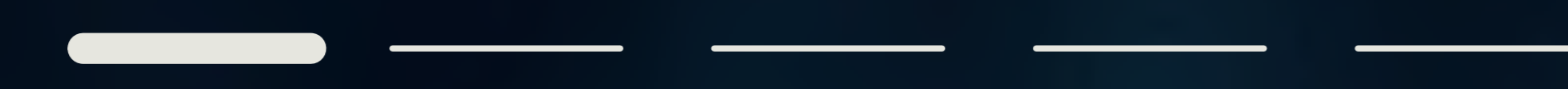
OCEAN CROSSING  
CAPABILITIES

CRUISER



**2 x 50 kW**

E-motors



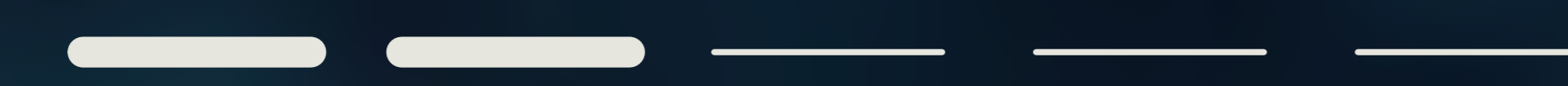
**143 kWh**

Lithium battery



**100 kW**

Generator



**6~8 kn**

Cruising speed

The ideal entry into the world of solar powered noiseless cruising.

Two electric motors allow you to seamlessly glide towards the horizon providing high levels of comfort, making this option suitable for long term economic cruising.

Furthermore, the solar electric drivetrain features unprecedented levels of reliability and security with almost zero maintenance work needed.

## E-POWER

— — — — —  
**2 x 200 kW**  
E-motors

— — — — —  
**207 kWh**  
Lithium battery

— — — — —  
**145 kW**  
Generator

— — — — —  
**6~8 kn**  
Cruising speed

The most powerful propulsion option combines the largest battery bank with the strongest electric motors available.

Higher speeds can be sustained for even longer periods of time while also maximizing the amount of energy which can be stored for back-up and deployed whenever needed.

Therefore, E-Power delivers the ultimate solar powered yachting experience.



E-POWER+

—————  
**2 x 340 kW**

E-motors

—————  
**268 kWh**

Lithium battery

—————  
**2 x 145 kW**

Generator

—————  
**6~8 kn**

Cruising speed

The most powerful propulsion option combines the largest battery bank with the strongest electric motors available.

Higher speeds can be sustained for even longer periods of time while also maximizing the amount of energy which can be stored for back-up and deployed whenever needed.

Therefore, E-Power+ delivers the ultimate solar powered yachting experience.



ADDITIONAL KITE  
SAIL SYSTEM

FULLY  
AUTOMATIC  
TOWING KITE

AVAILABLE FOR  
ALL  
OUR MODELS

DYNAMIC FLIGHT  
PATTERN RESEMBLING A  
FIGURE 8

UP TO 10x MORE POWER  
PER m<sup>2</sup> COMPARED TO A  
CONVENTIONAL SAIL

## SILENT 62 3-DECK EQUIPMENT

### STANDARD FEATURES

4 Cabins: 1 full-width (20 m<sup>2</sup>) Master-cabin , 1 VIP-cabin, 2 generous guest cabins, with 1 double bed or 2 single beds each. All cabins with en-suite bathroom.

2 x 50 kW e-motors on shafts, 143 kWh lithium battery, 100 kW diesel generator.

Electro-hydraulic steering and controls for 2 motors at the helm positions.

Side-by-side fridge/freezer with ice maker and chilled water.

Navigation instruments: 4 monitors 9" with world basemap, 4 G broadband radar, electronic compass, autopilot incl. controller and pump, rudder feedback, AIS class B, 2 set of VHF radio, antennas, depth sounder, weather station + 2x AP control unit.

High efficiency air conditioning system.

High pressure water maker producing 95 L / h.

Rigid sunroof over flybridge.

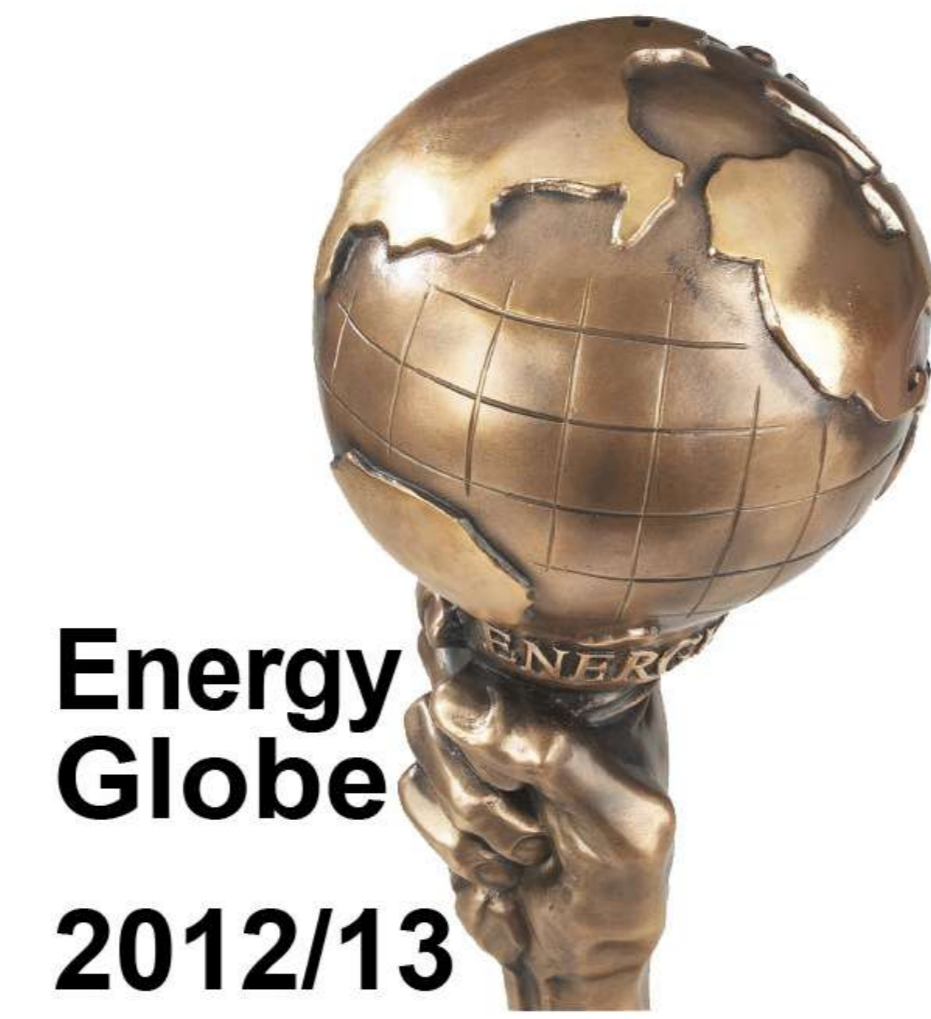
### OPTIONAL FEATURES

Front exit and front cockpit.

Hydraulic stern-platform serves as a tender- lift and as a swimming platform.

Retractable sunroof incl. hydraulic lifting system, control switches + remote control.

# SILENT



Multi-Award Winning Design & Engineering  
sales@silent-yachts.com | www.silent-yachts.com